

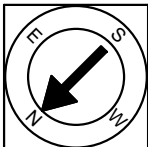
**First Floor Plan**  
 Ceiling Height = 9'-0"

11 Spy Pond Parkway  
 Arlington, MA 02474



Scale 1" = 10'-0"

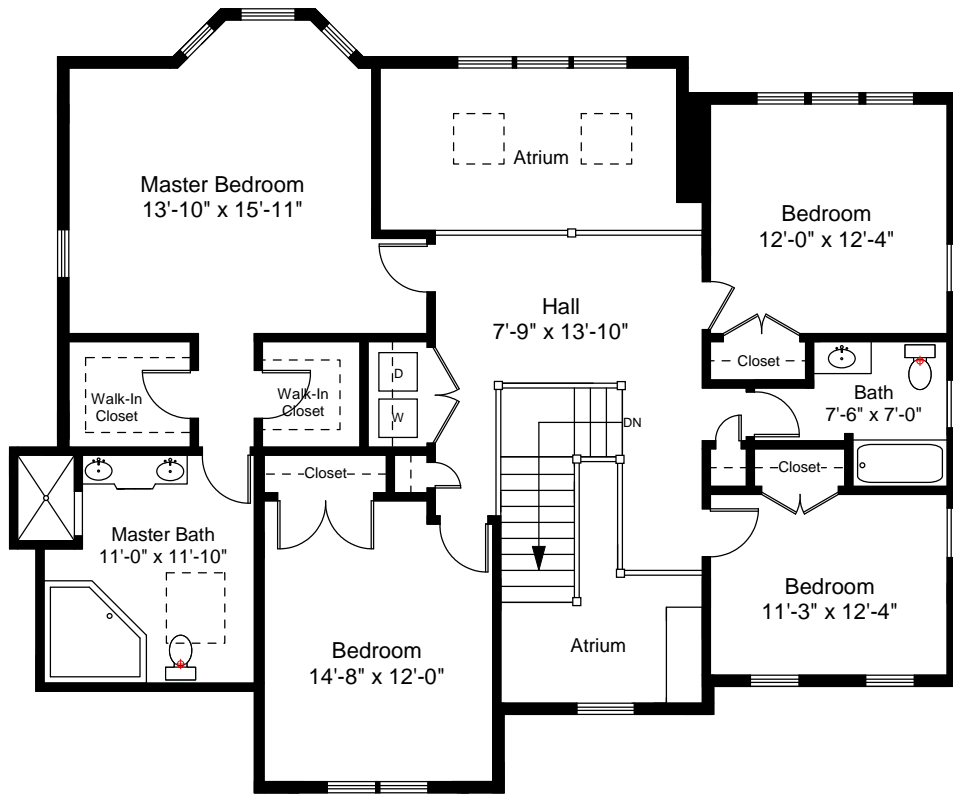
1



**Completed: May, 2010**

*Note:* Dimensions are not guaranteed and are provided for informational purposes only.

**NEW ENGLAND**  
 FLOOR PLANS  
 & PHOTOGRAPHY  
 (800) 328-0217



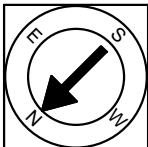
**Second Floor Plan**  
Ceiling Height = 8'-0"

11 Spy Pond Parkway  
Arlington, MA 02474



Scale 1" = 10'-0"

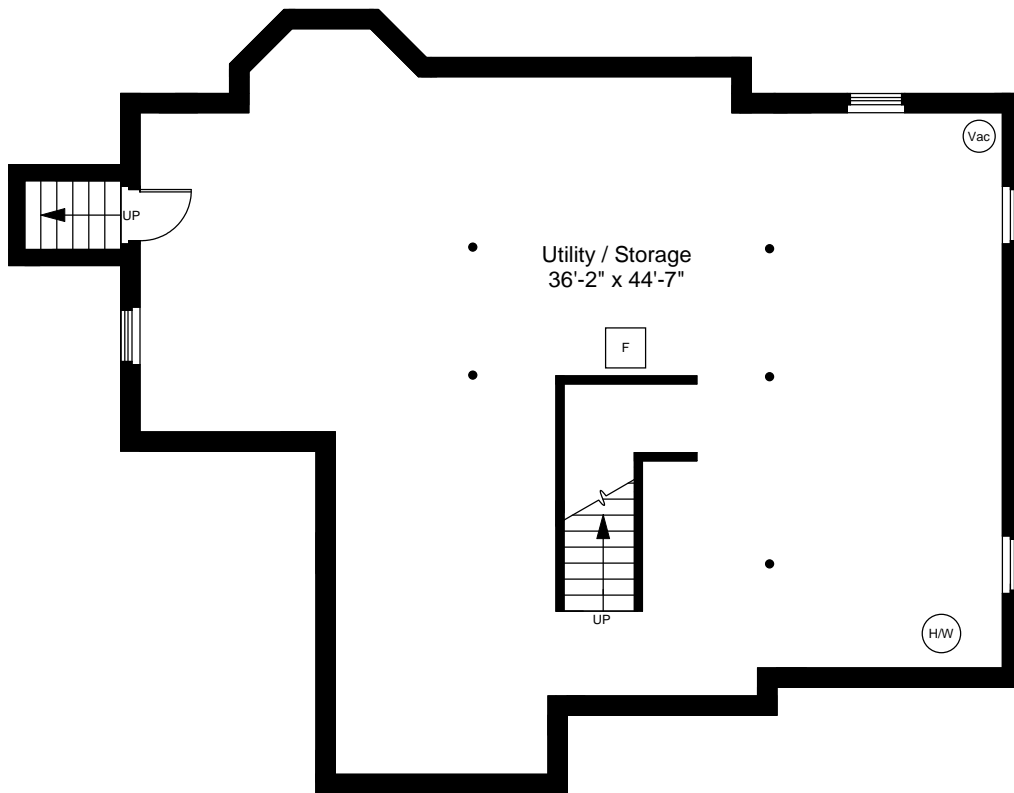
2



**Completed: May, 2010**

Note: Dimensions are not guaranteed and are provided for informational purposes only.

**NEW ENGLAND**  
FLOOR PLANS  
& PHOTOGRAPHY  
(800) 328-0217



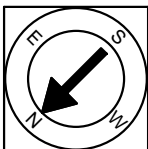
Basement Floor Plan  
Ceiling Height = 7'-8"

11 Spy Pond Parkway  
Arlington, MA 02474



Scale 1" = 10'-0"

3



Completed: May, 2010

Note: Dimensions are not guaranteed and are provided for informational purposes only.

**NEW ENGLAND**  
FLOOR PLANS  
& PHOTOGRAPHY  
(800) 328-0217