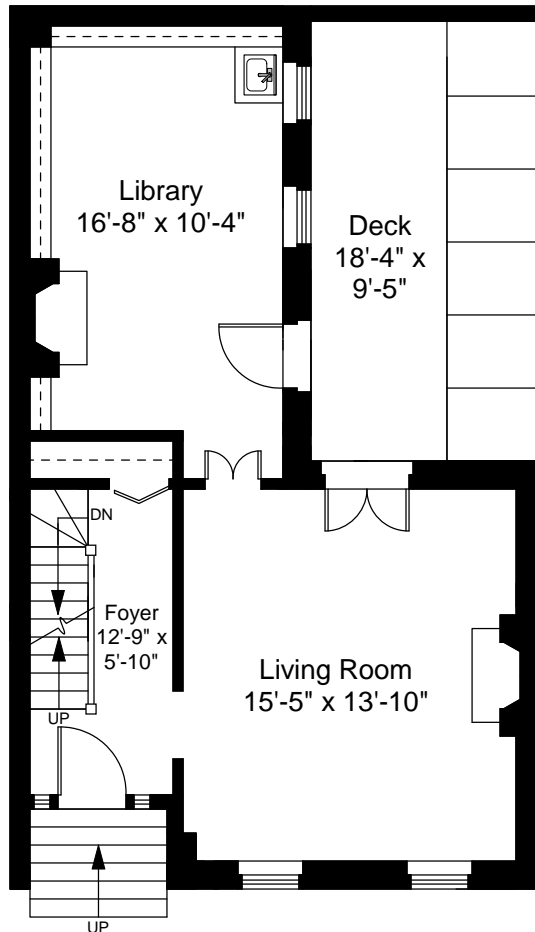


Lower Level Floor Plan
Ceiling Height = 7'-4"



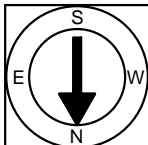
First Floor Plan
Ceiling Height = 8'-10"

126 Myrtle Street
Boston, MA 02114



Scale 1/8" = 1'-0"

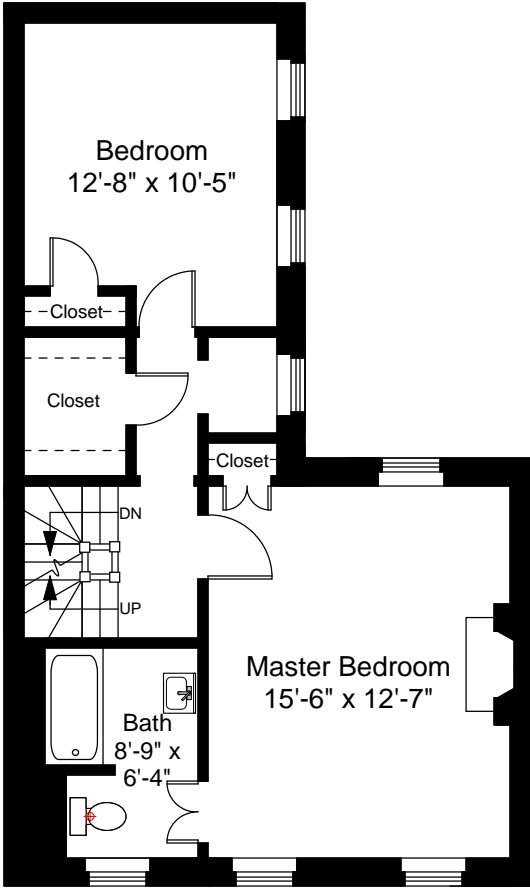
1



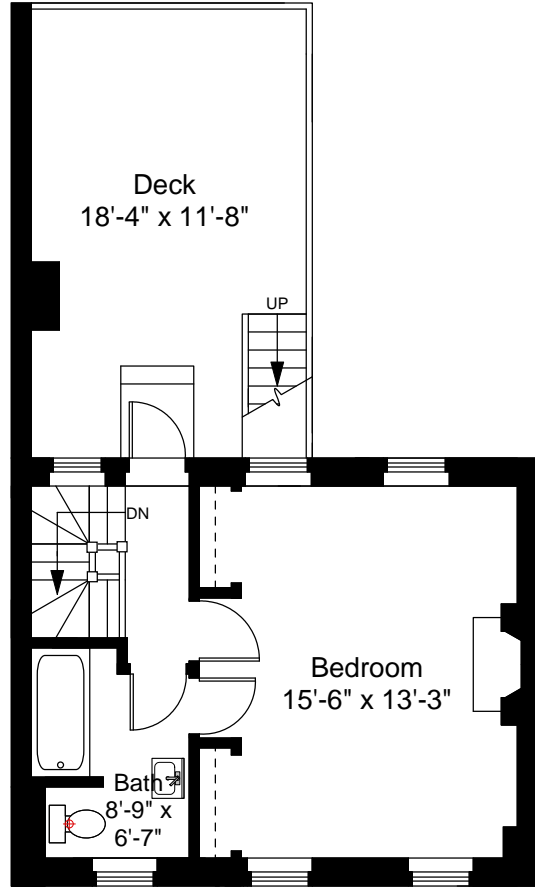
Completed: June, 2010

Note: Dimensions are not guaranteed and are provided for informational purposes only.

NEW ENGLAND
FLOOR PLANS
& PHOTOGRAPHY
(800) 328-0217



Second Floor Plan
Ceiling Height = 8'-4"



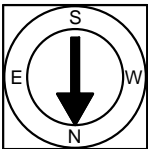
Third Floor Plan
Ceiling Height = 7'-5"

126 Myrtle Street
Boston, MA 02114



Scale 1/8" = 1'-0"

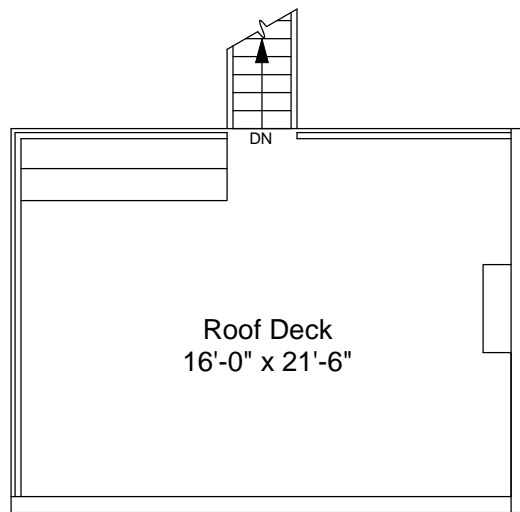
2



Completed: June, 2010

Note: Dimensions are not guaranteed and are provided for informational purposes only.

NEW ENGLAND
FLOOR PLANS
& PHOTOGRAPHY
(800) 328-0217



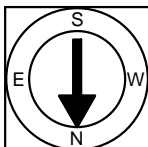
Roof Deck Plan

126 Myrtle Street
Boston, MA 02114



Scale 1/8" = 1'-0"

3



Completed: June, 2010

Note: Dimensions are not guaranteed and are provided for informational purposes only.

NEW ENGLAND
FLOOR PLANS
& PHOTOGRAPHY
(800) 328-0217