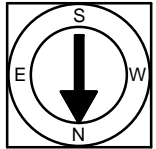


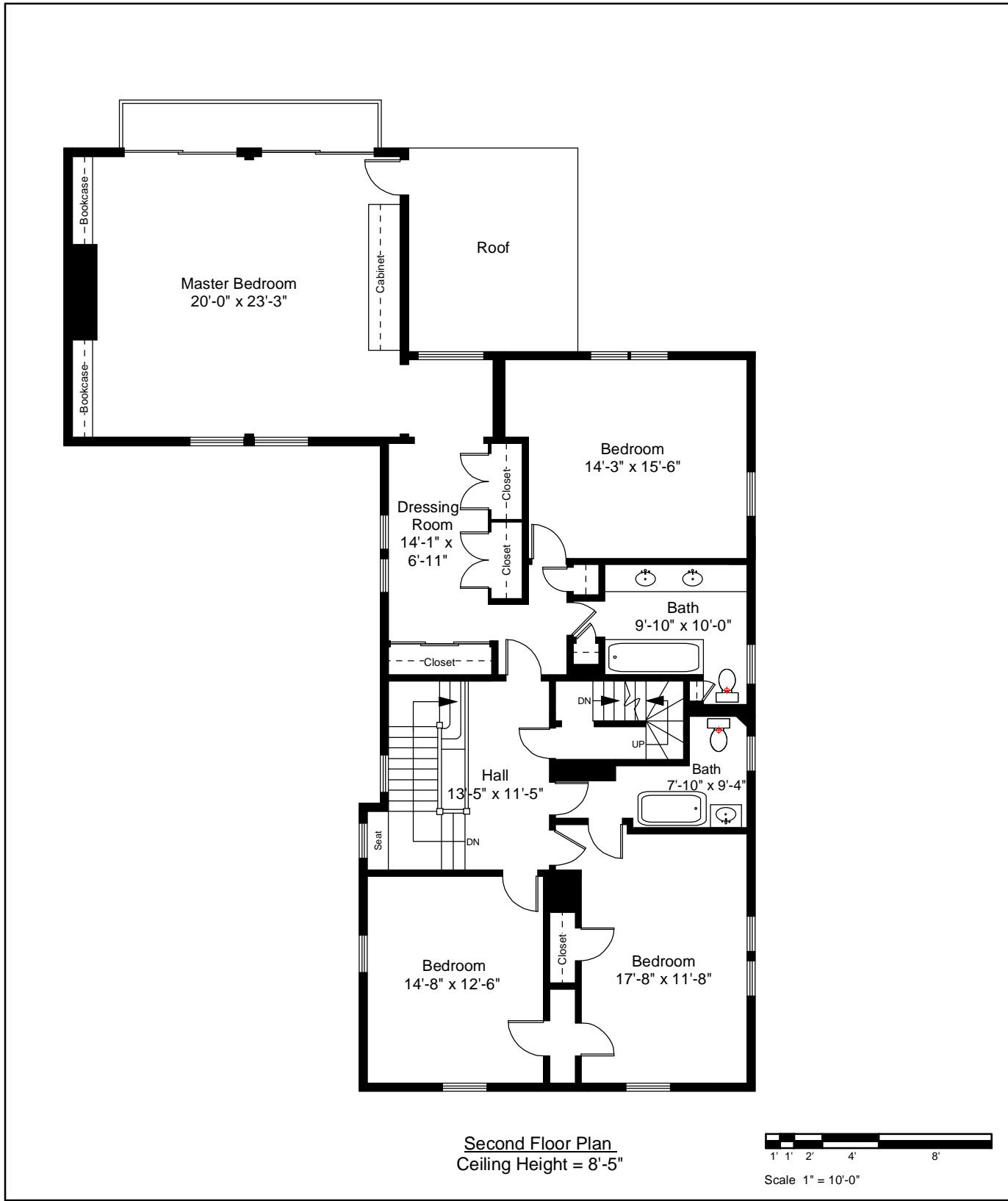
1



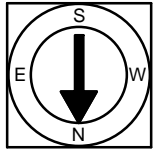
Completed: April, 2009

Note: Dimensions are not guaranteed and are provided for informational purposes only.

NEW ENGLAND
FLOOR PLANS
& PHOTOGRAPHY
(800) 328-0217



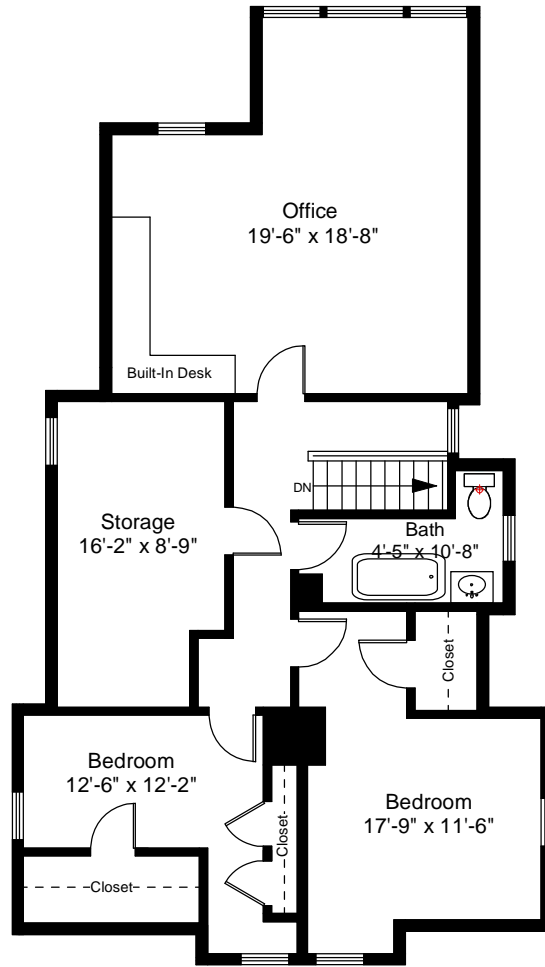
2



Completed: April, 2009

Note: Dimensions are not guaranteed and are provided for informational purposes only.



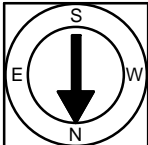


Third Floor Plan
Ceiling Height = 7'-1"



Scale 1" = 10'-0"

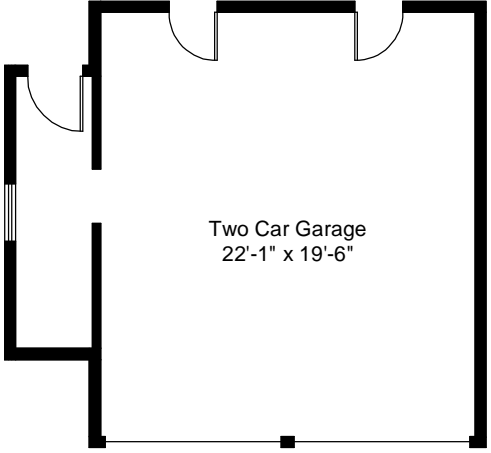
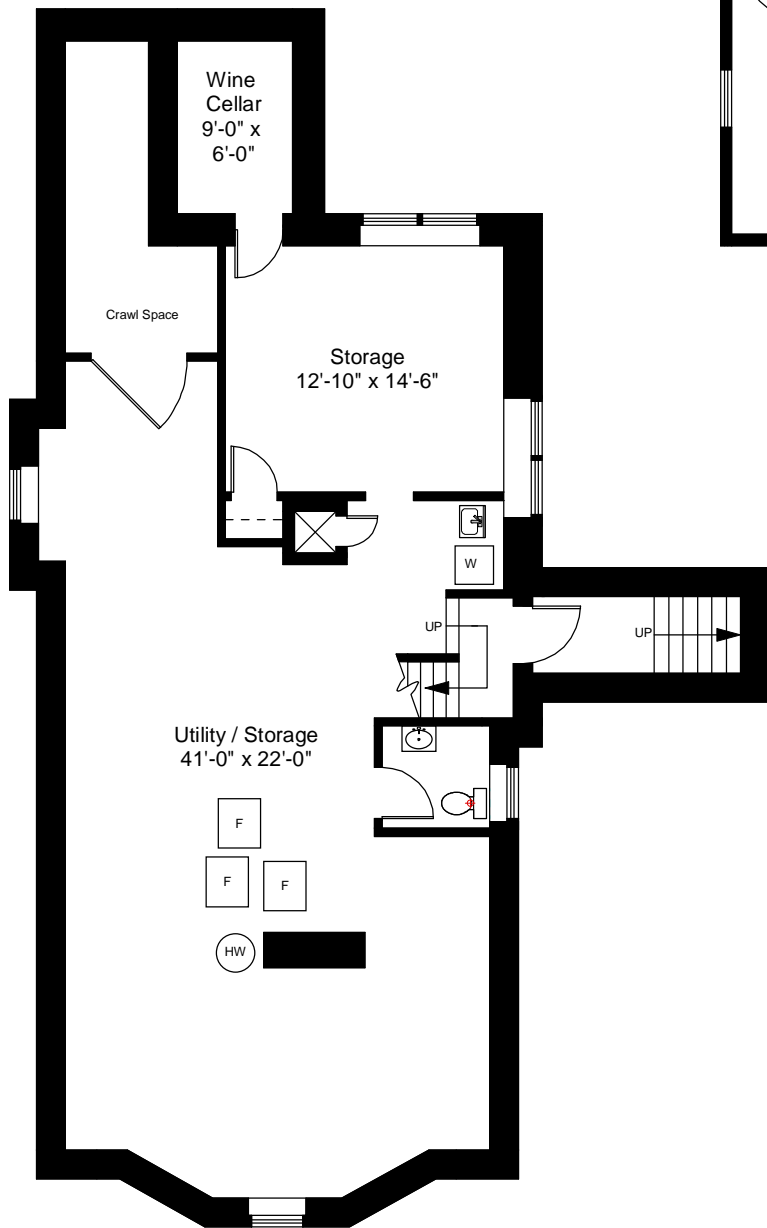
3



Completed: April, 2009

Note: Dimensions are not guaranteed and are provided for informational purposes only.


NEW ENGLAND
—FLOOR PLANS—
& PHOTOGRAPHY
(800) 328-0217



Garage Detail Plan

Basement Floor Plan
Ceiling Height = 8'-0"



Scale 1" = 10'-0"

