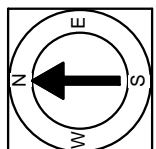


First Floor Plan
Ceiling Height = 8'-4"



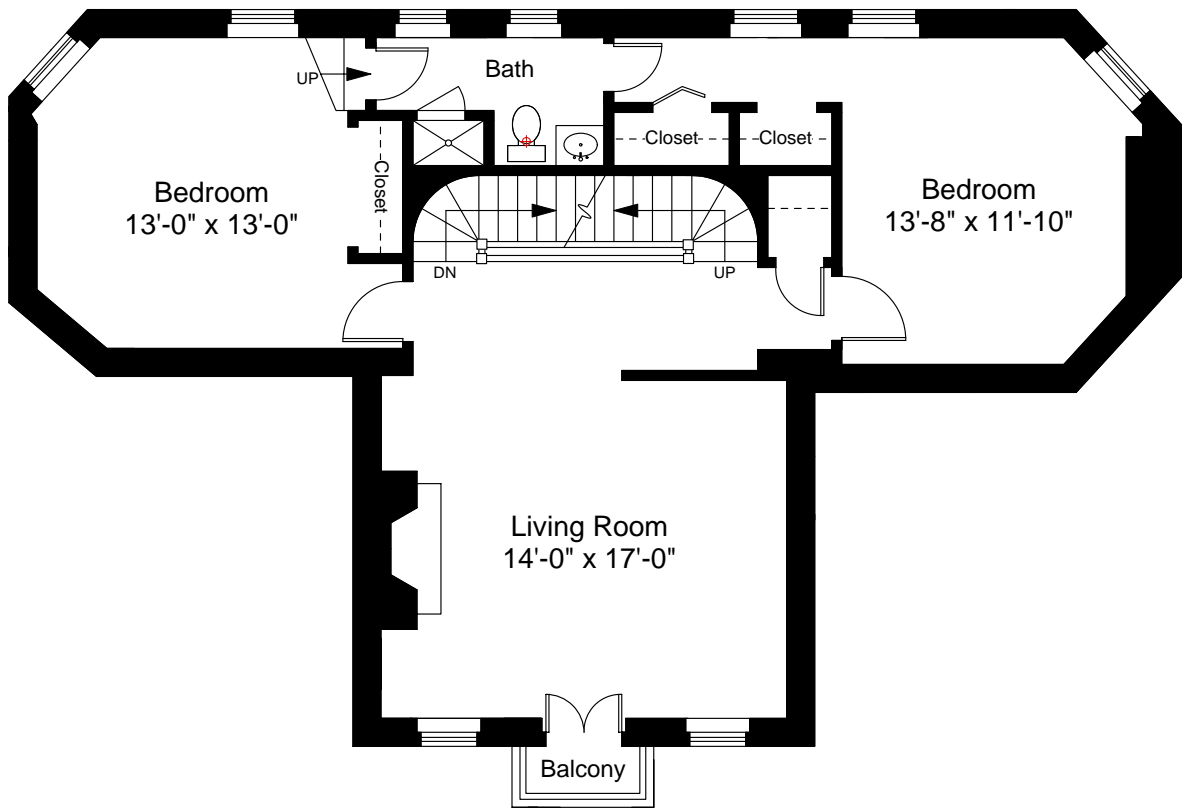
Scale 1/8" = 1'-0"

1



Completed: December, 2007
Note: Dimensions are not guaranteed and are provided for informational purposes only.



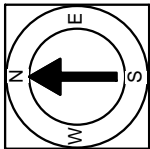


Second Floor Plan
Ceiling Height = 9'-5"



Scale 1/8" = 1'-0"

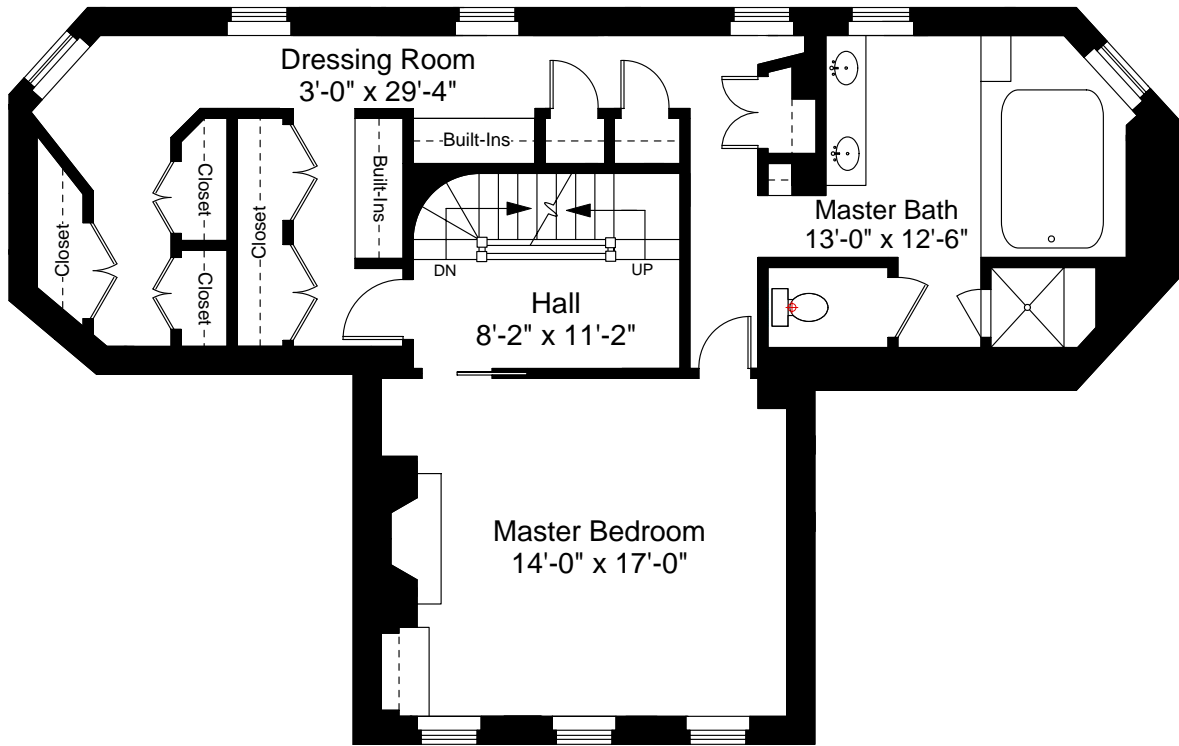
2



Completed: December, 2007

Note: Dimensions are not guaranteed and are provided for informational purposes only.


NEW ENGLAND
— FLOOR PLANS —
(617) 872-3336

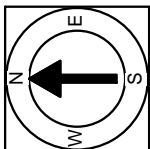


Third Floor Plan
Ceiling Height = 8'-0"



Scale 1/8" = 1'-0"

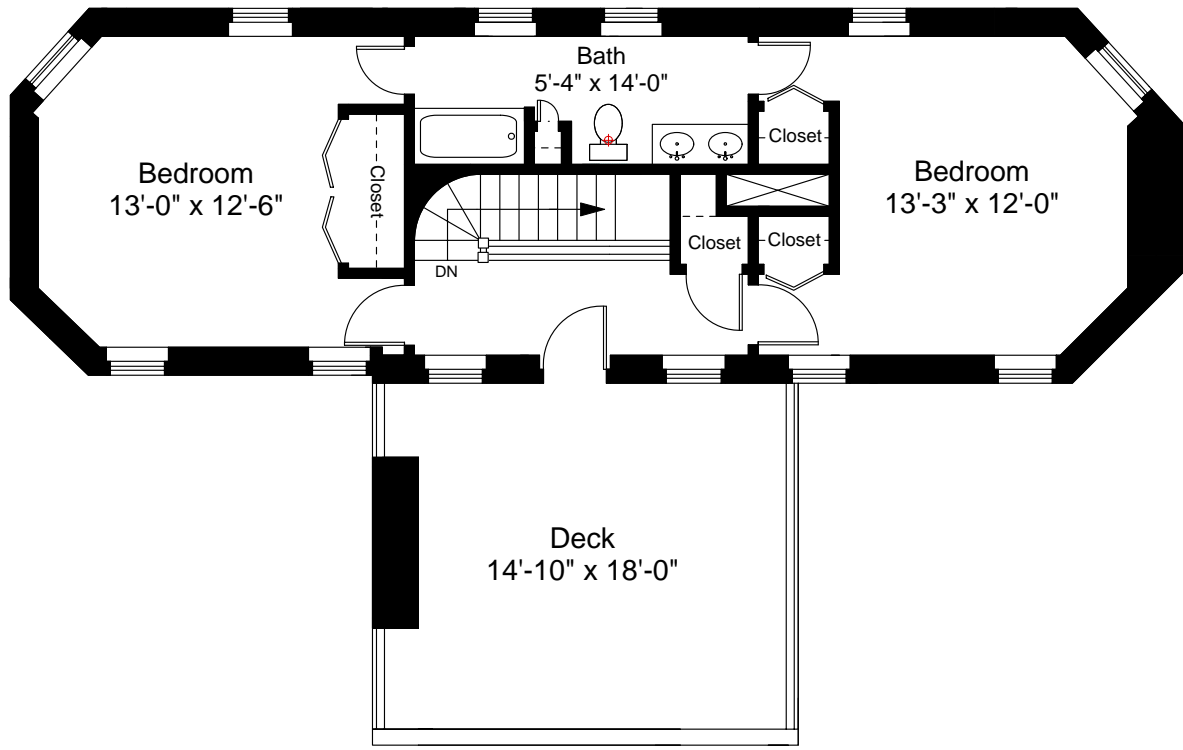
3



Completed: December, 2007

Note: Dimensions are not guaranteed and are provided for informational purposes only.

NEW ENGLAND
FLOOR PLANS
(617) 872-3336

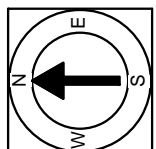


Fourth Floor Plan
Ceiling Height = 8'-0"



Scale 1/8" = 1'-0"

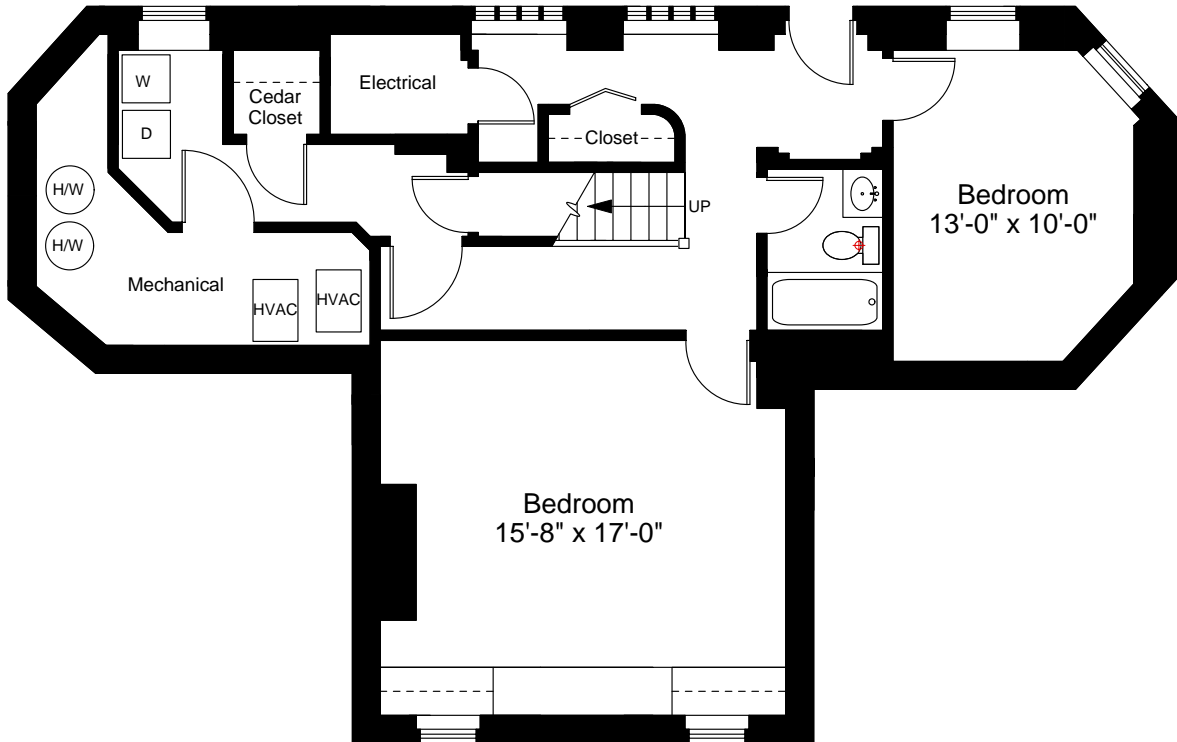
4



Completed: December, 2007

Note: Dimensions are not guaranteed and are provided for informational purposes only.

NEW ENGLAND
 FLOOR PLANS
 (617) 872-3336

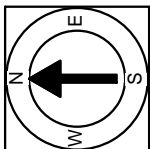


Lower Level Floor Plan
Ceiling Height = 7'-10"



Scale 1/8" = 1'-0"

5



Completed: December, 2007

Note: Dimensions are not guaranteed and are provided for informational purposes only.


NEW ENGLAND
— FLOOR PLANS —
(617) 872-3336