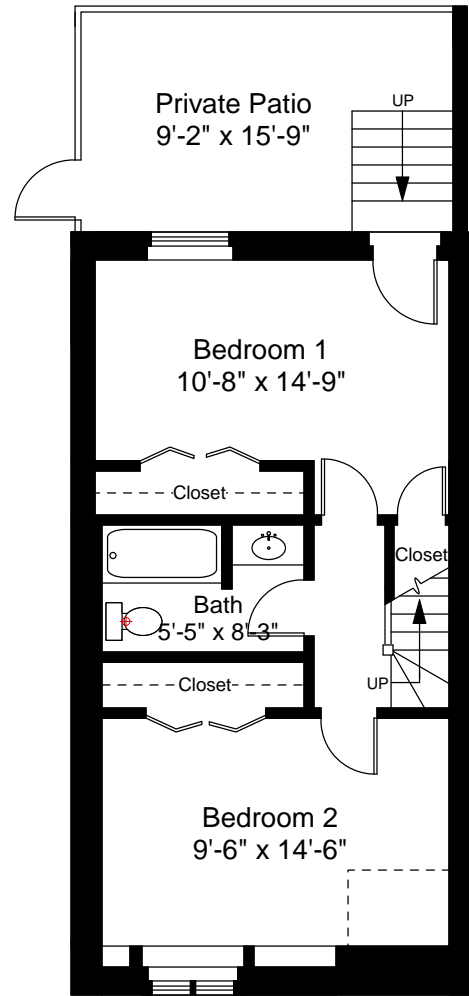


Upper Level Floor Plan
Ceiling Height = 9'-3"



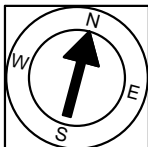
Lower Level Floor Plan
Ceiling Height = 7'-6"

15 Gray Street, Unit 1
Boston, MA 02116



Scale 1/8" = 1'-0"

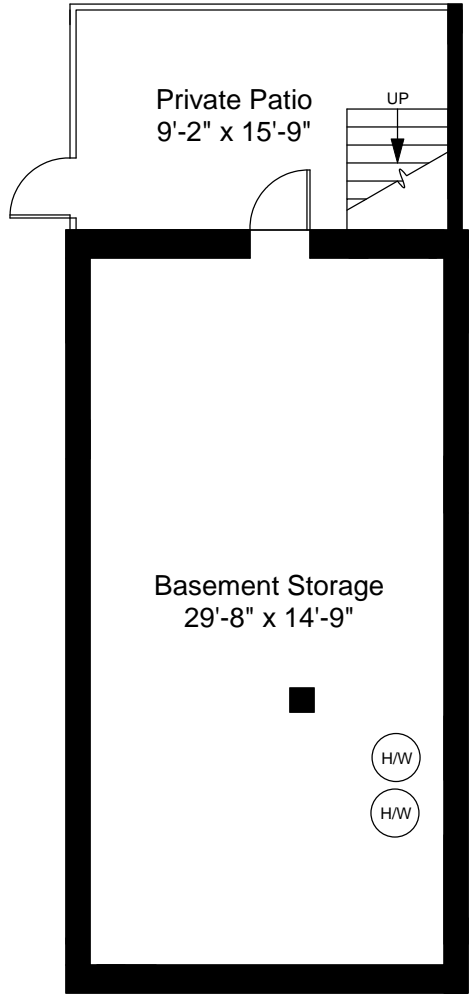
1



Completed: August, 2010

Note: Dimensions are not guaranteed and are provided for informational purposes only.

NEW ENGLAND
FLOOR PLANS
& PHOTOGRAPHY
(800) 328-0217



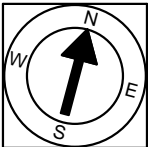
Basement Floor Plan
Ceiling Height = 5'-0"

15 Gray Street, Unit 1
Boston, MA 02116



Scale 1/8" = 1'-0"

2



Completed: August, 2010

Note: Dimensions are not guaranteed and are provided for informational purposes only.

NEW ENGLAND
FLOOR PLANS
& PHOTOGRAPHY
(800) 328-0217