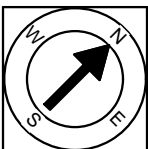


First Floor Plan
 Ceiling Height = 7'-5"



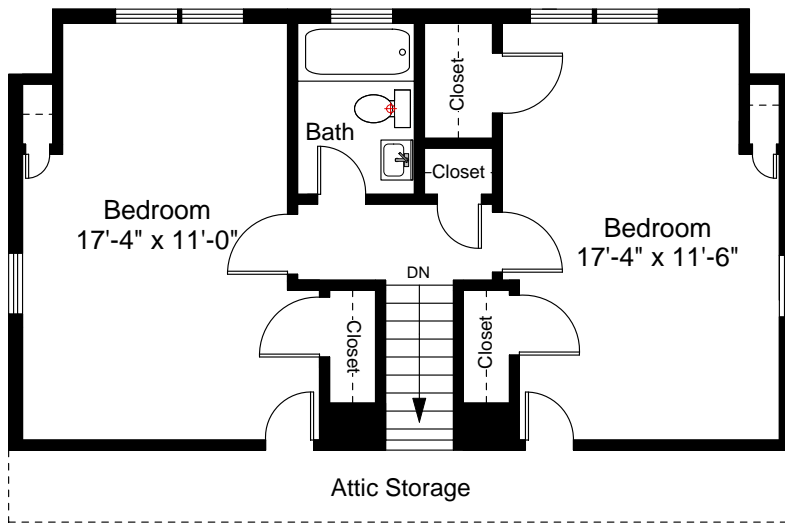
Scale 1/8" = 1'-0"

1



Completed: October, 2008
 Note: Dimensions are not guaranteed and are provided for informational purposes only.



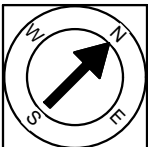


Second Floor Plan
 Ceiling Height = 7'-2"



Scale 1/8" = 1'-0"

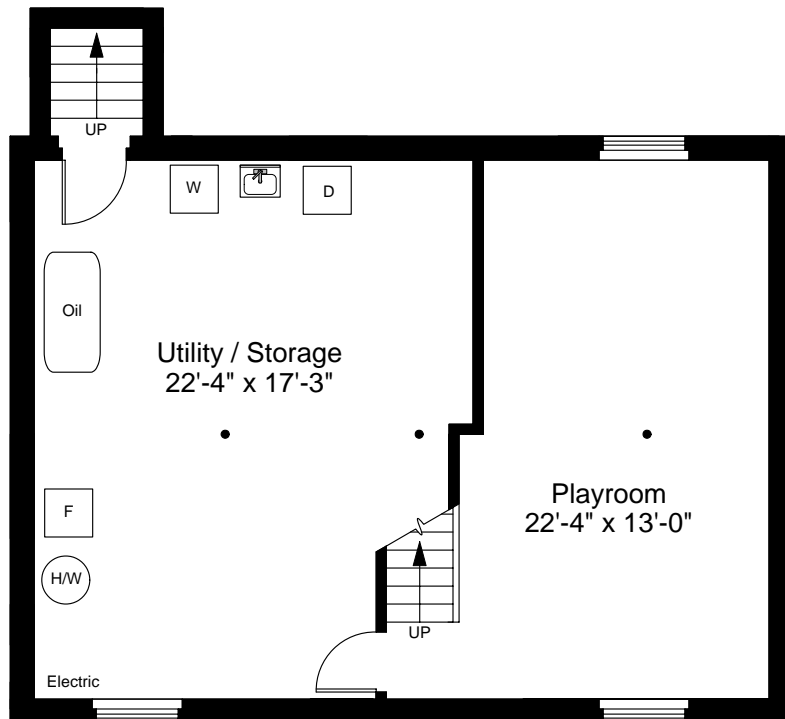
2



Completed: October, 2008

Note: Dimensions are not guaranteed and are provided for informational purposes only.


NEW ENGLAND
 FLOOR PLANS
 & PHOTOGRAPHY
 (800) 328-0217

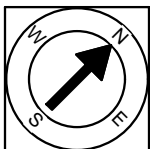


Basement Floor Plan
Ceiling Height = 7'-0"



Scale 1/8" = 1'-0"

3



Completed: October, 2008

Note: Dimensions are not guaranteed and are provided for informational purposes only.

NEW ENGLAND
 FLOOR PLANS
 & PHOTOGRAPHY
 (800) 328-0217