

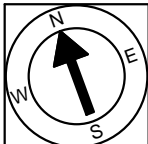
21 Mead Street
Cambridge, MA 02140

First Floor Plan
Ceiling Height = 8'-6"



Scale 1/8" = 1'-0"

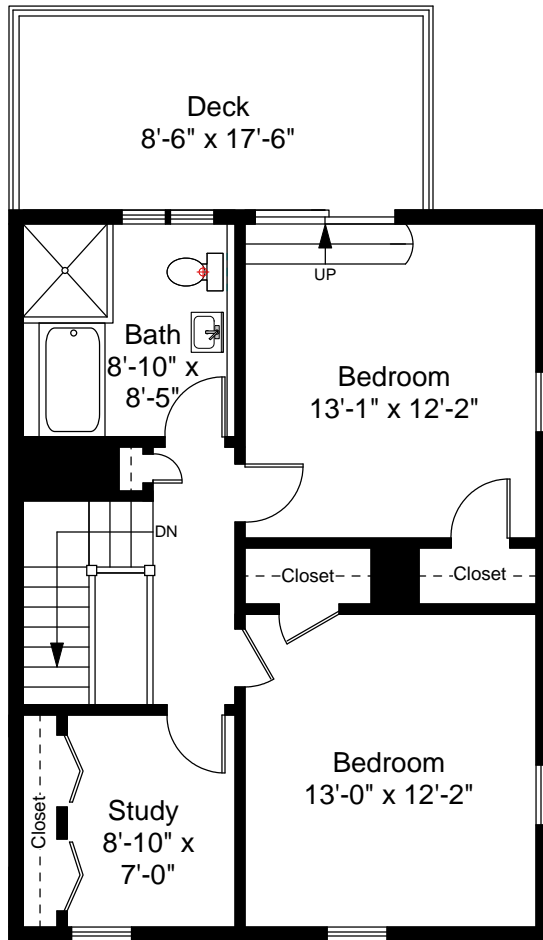
1



Completed: March, 2010

Note: Dimensions are not guaranteed and are provided for informational purposes only.

NEW ENGLAND
FLOOR PLANS
& PHOTOGRAPHY
(800) 328-0217



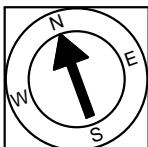
Second Floor Plan
 Ceiling Height = 8'-6"

21 Mead Street
 Cambridge, MA 02140



Scale 1/8" = 1'-0"

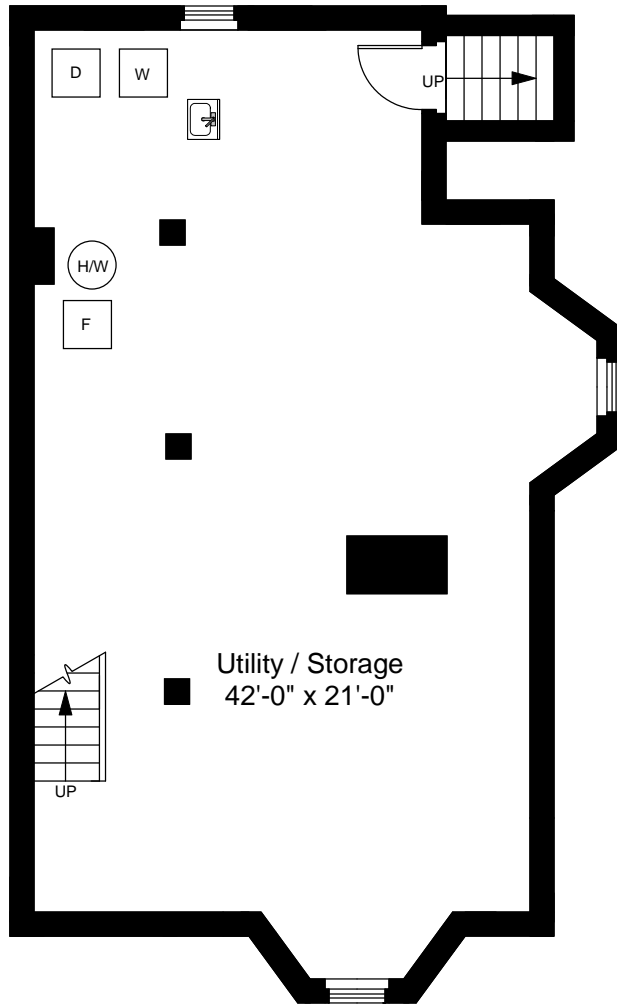
2



Completed: March, 2010

Note: Dimensions are not guaranteed and are provided for informational purposes only.

NEW ENGLAND
 FLOOR PLANS
 & PHOTOGRAPHY
 (800) 328-0217



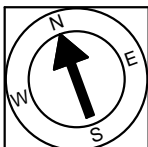
Basement Floor Plan
 Ceiling Height = 6'-5"

21 Mead Street
 Cambridge, MA 02140



Scale 1/8" = 1'-0"

3



Completed: March, 2010

Note: Dimensions are not guaranteed and are provided for informational purposes only.

NEW ENGLAND
 FLOOR PLANS
 & PHOTOGRAPHY
 (800) 328-0217