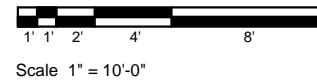
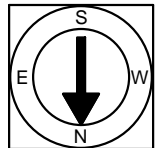


First Floor Plan  
 Ceiling Height = 8'-3"

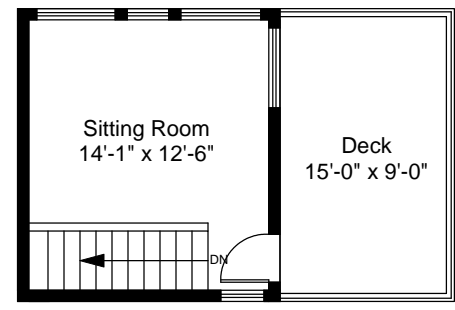
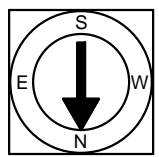
228 Hull Cove Farm Road  
 Jamestown, RI 02835



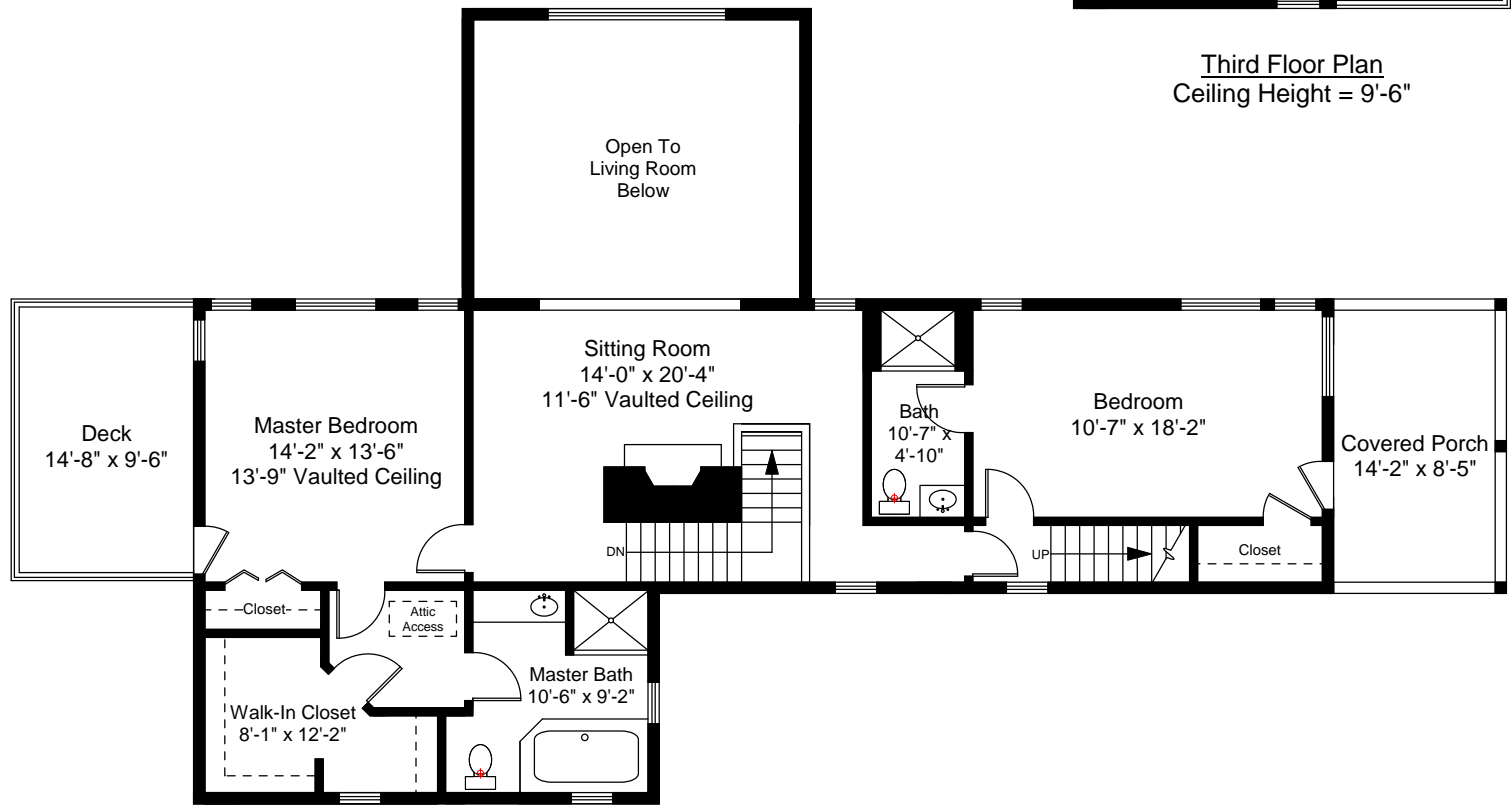
Completed: June, 2010  
 Note: Dimensions are not guaranteed and are provided for informational purposes only.



Completed: June, 2010  
 Note: Dimensions are not guaranteed and are provided for informational purposes only.

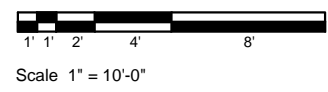


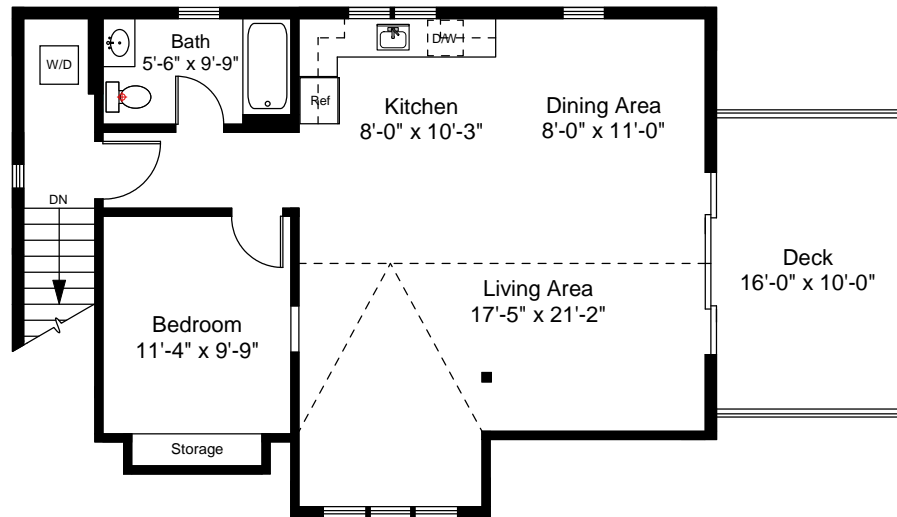
Third Floor Plan  
 Ceiling Height = 9'-6"



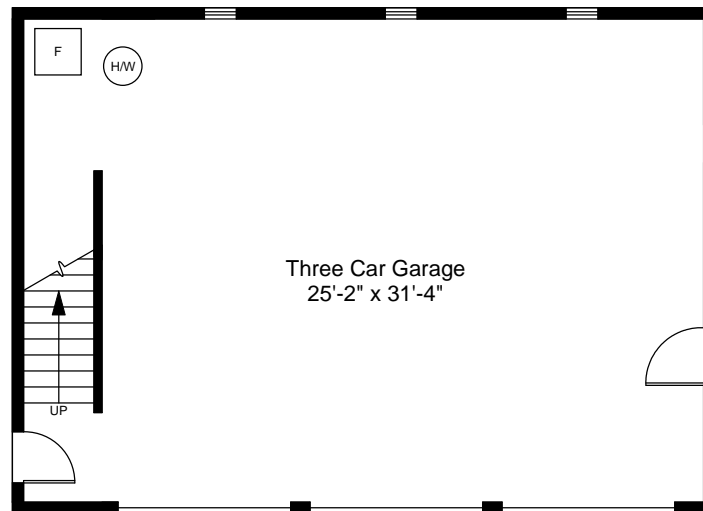
Second Floor Plan  
 Ceiling Height = 8'-0"

228 Hull Cove Farm Road  
 Jamestown, RI 02835





Carriage House - Second Floor Plan  
Vaulted Ceiling Height = 12'-6"



Carriage House - First Floor Plan  
Ceiling Height = 8'-7"

228 Hull Cove Farm Road  
Jamestown, RI 02835

