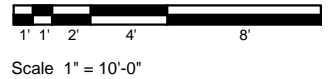
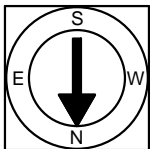


24 Highland Street
Cambridge, MA 02138

First Floor Plan
Ceiling Height = 9'-6"



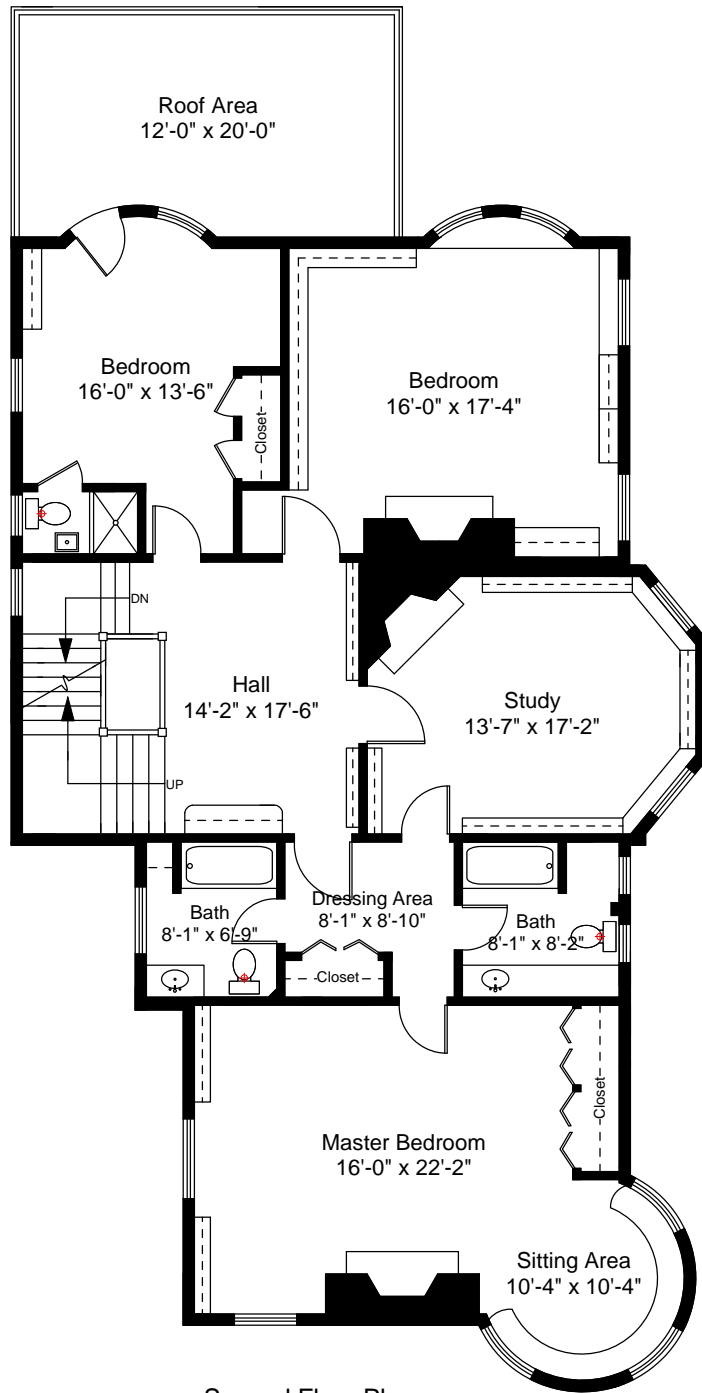
1



Completed: August, 2009

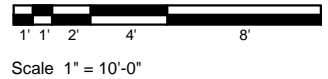
Note: Dimensions are not guaranteed and are provided for informational purposes only.

NEW ENGLAND
— FLOOR PLANS —
& PHOTOGRAPHY
(800) 328-0217

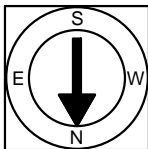


24 Highland Street
Cambridge, MA 02138

Second Floor Plan
Ceiling Height = 9'-6"



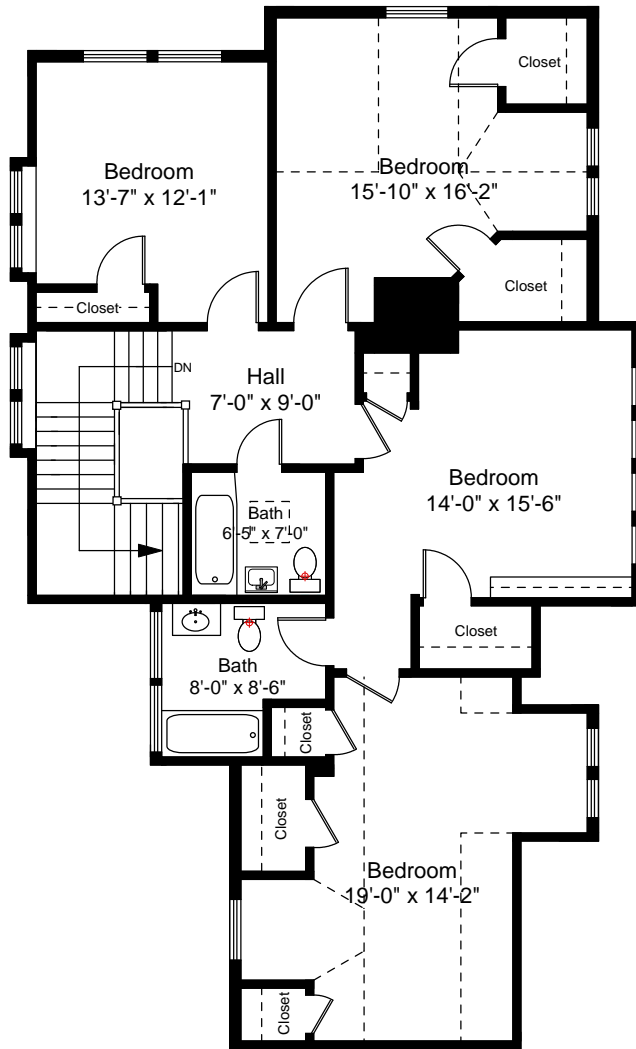
2



Completed: August, 2009

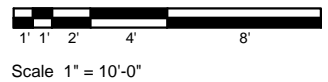
Note: Dimensions are not guaranteed and are provided for informational purposes only.

NEW ENGLAND
FLOOR PLANS
& PHOTOGRAPHY
(800) 328-0217

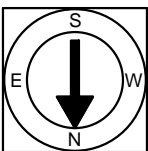


Third Floor Plan
Ceiling Height = 9'-0"

24 Highland Street
Cambridge, MA 02138



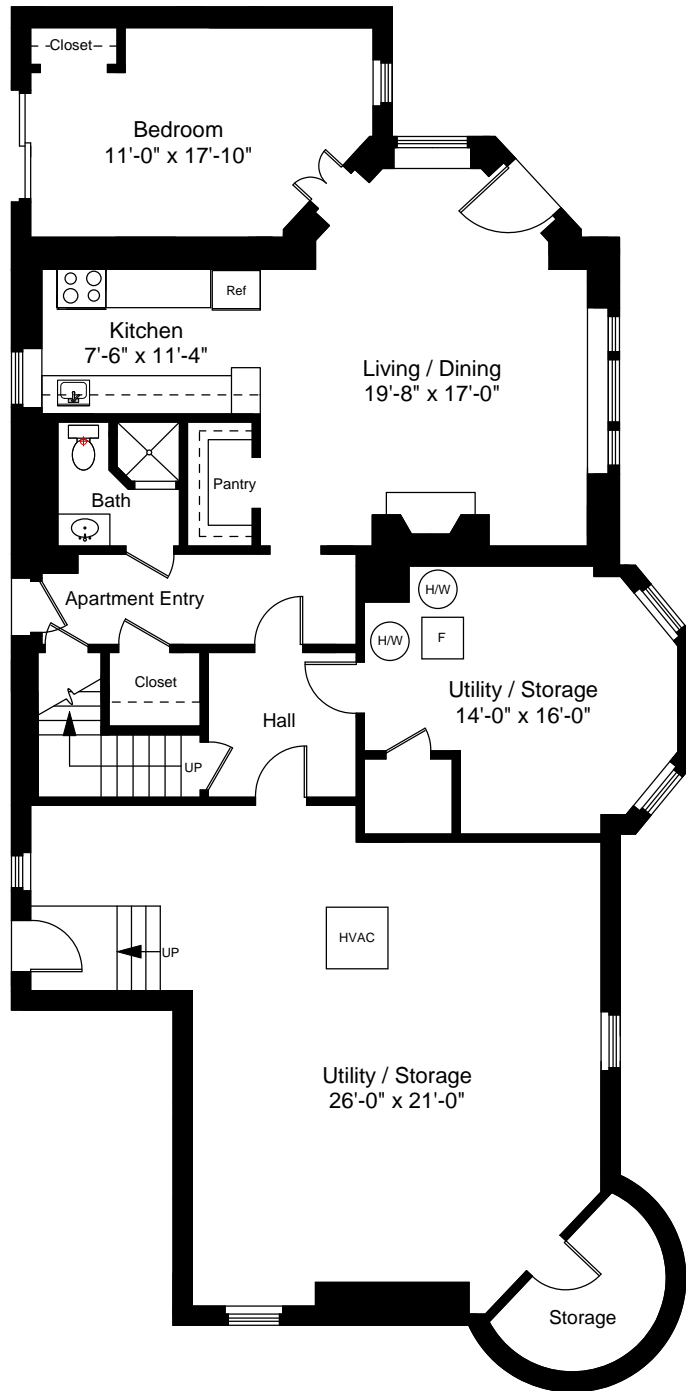
3



Completed: August, 2009

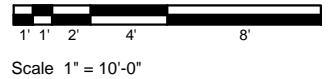
Note: Dimensions are not guaranteed and are provided for informational purposes only.

NEW ENGLAND
FLOOR PLANS
& PHOTOGRAPHY
(800) 328-0217

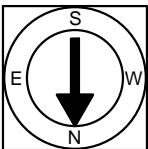


24 Highland Street
Cambridge, MA 02138

Lower Level Floor Plan
Ceiling Height = 9'-2"



4



Completed: August, 2009
Note: Dimensions are not guaranteed and are provided for informational purposes only.

NEW ENGLAND
FLOOR PLANS
& PHOTOGRAPHY
(800) 328-0217