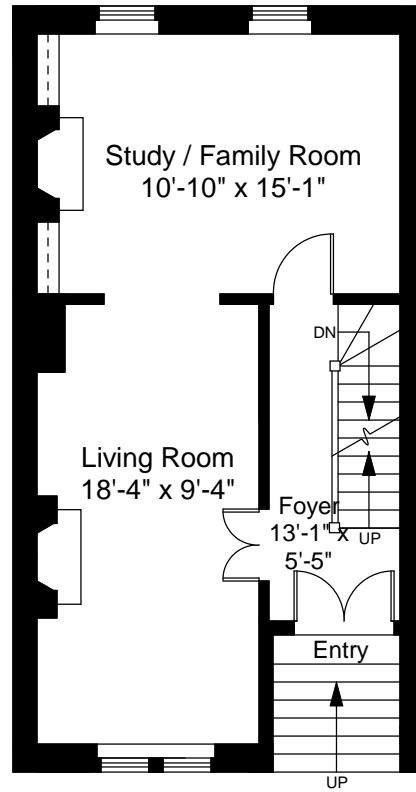


Garden Level Floor Plan
Ceiling Height = 6'-10"



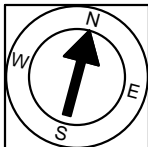
First Floor Plan
Ceiling Height = 9'-4"

27 Gray Street
Boston, MA 02116



Scale 1/8" = 1'-0"

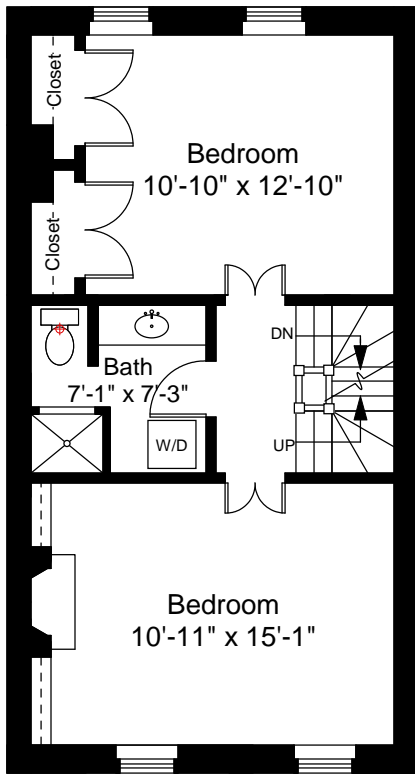
1



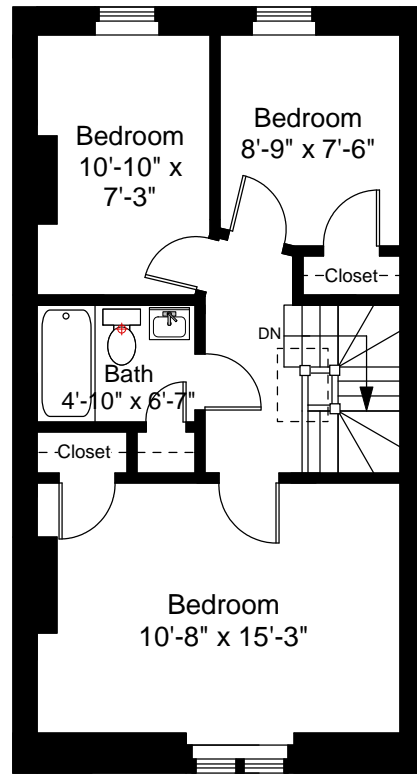
Completed: February, 2010

Note: Dimensions are not guaranteed and are provided for informational purposes only.

NEW ENGLAND
FLOOR PLANS
& PHOTOGRAPHY
(800) 328-0217



Second Floor Plan
Ceiling Height = 8'-6"



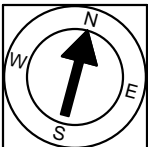
Third Floor Plan
Ceiling Height = 7'-9"

27 Gray Street
Boston, MA 02116



Scale 1/8" = 1'-0"

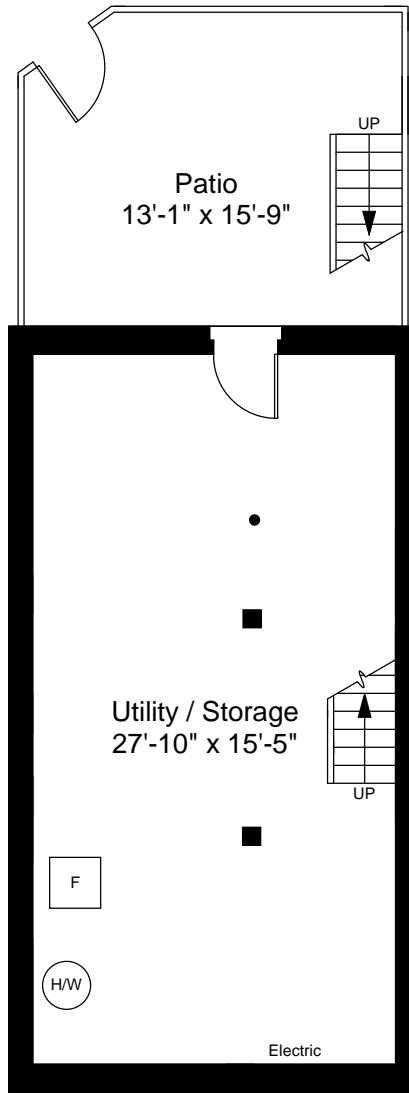
2



Completed: February, 2010

Note: Dimensions are not guaranteed and are provided for informational purposes only.

NEW ENGLAND
FLOOR PLANS
& PHOTOGRAPHY
(800) 328-0217



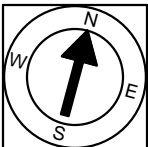
Basement Floor Plan
Ceiling Height = 6'-0"

27 Gray Street
Boston, MA 02116



Scale 1/8" = 1'-0"

3



Completed: February, 2010

Note: Dimensions are not guaranteed and are provided for informational purposes only.

NEW ENGLAND
FLOOR PLANS
& PHOTOGRAPHY
(800) 328-0217