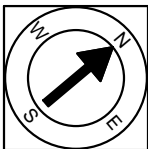


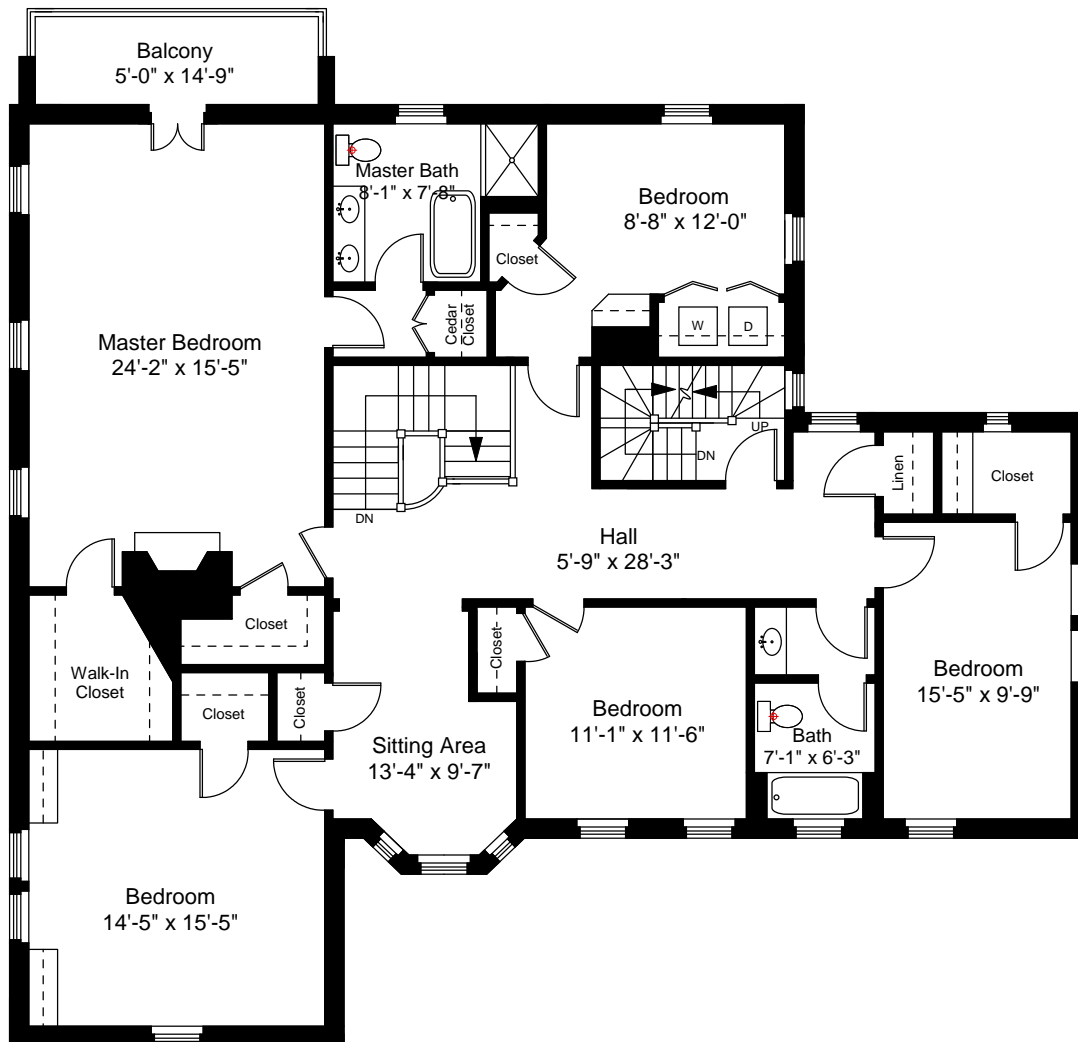
1



**Completed: May, 2009**

Note: Dimensions are not guaranteed and are provided for informational purposes only.



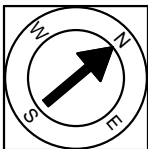


**Second Floor Plan**  
Ceiling Height = 8'-6"



Scale 1" = 10'-0"

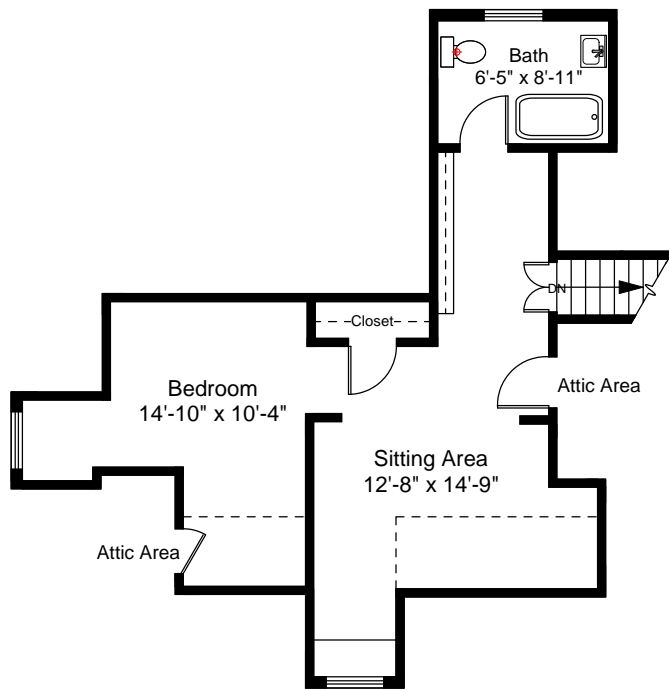
2



**Completed: May, 2009**

Note: Dimensions are not guaranteed and are provided for informational purposes only.

**NEW ENGLAND**  
FLOOR PLANS  
& PHOTOGRAPHY  
(800) 328-0217

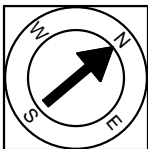


Third Floor Plan  
Ceiling Height = 7'-0"



Scale 1" = 10'-0"

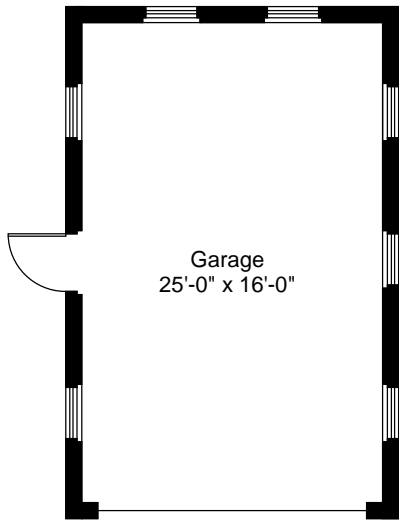
3



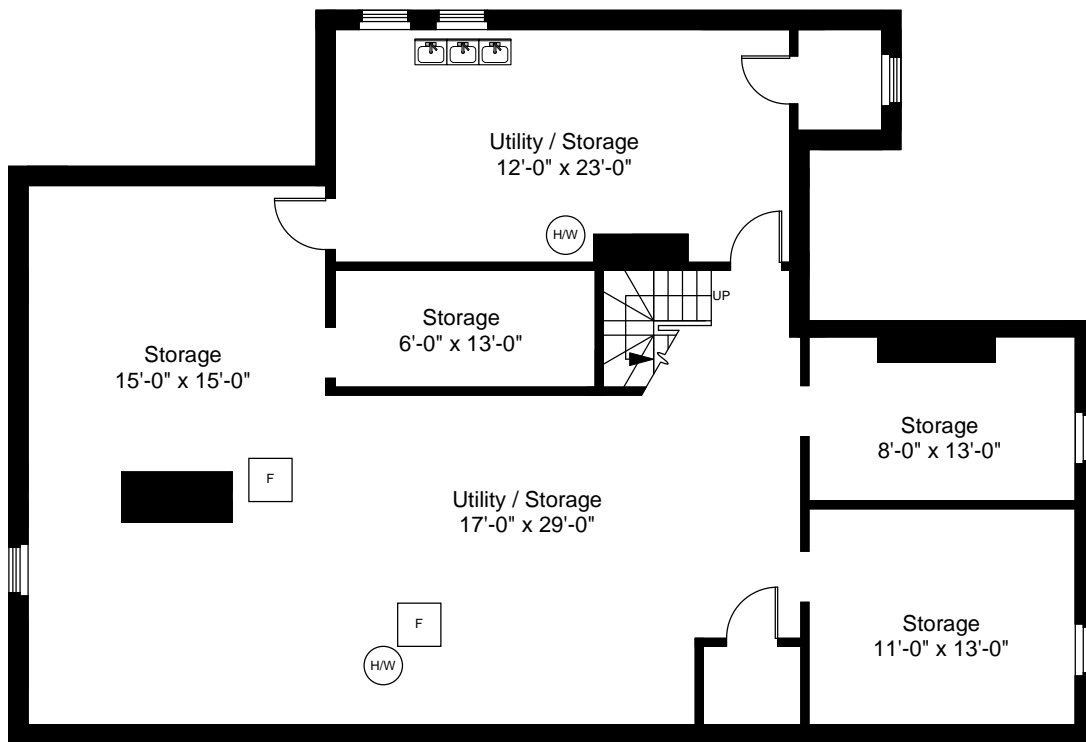
Completed: May, 2009

Note: Dimensions are not guaranteed and are provided for informational purposes only.

NEW ENGLAND  
FLOOR PLANS  
& PHOTOGRAPHY  
(800) 328-0217



Garage Floor Plan

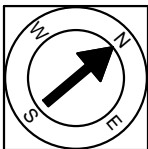


Basement Floor Plan  
Ceiling Height = 7'-5"



Scale 1" = 10'-0"

4



Completed: May, 2009

Note: Dimensions are not guaranteed and are provided for informational purposes only.

**NEW ENGLAND**  
FLOOR PLANS  
& PHOTOGRAPHY  
(800) 328-0217