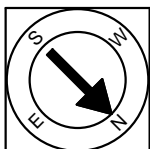


Scale 1/8" = 1'-0"

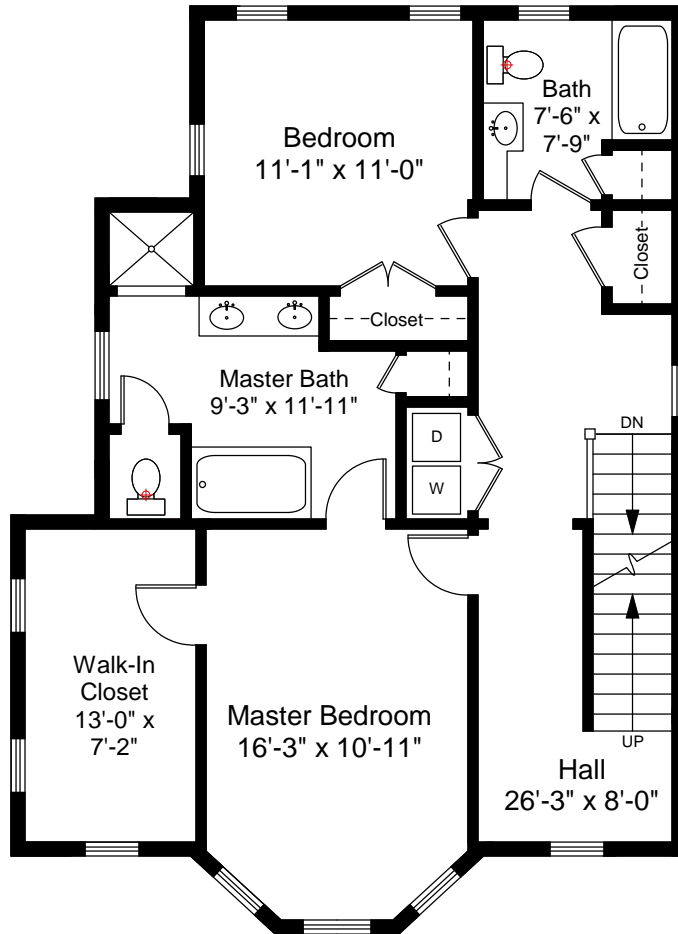
1



Completed: September, 2009

Note: Dimensions are not guaranteed and are provided for informational purposes only.

**NEW ENGLAND**  
FLOOR PLANS  
& PHOTOGRAPHY  
(800) 328-0217

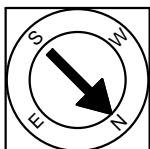


Second Floor Plan  
Ceiling Height = 8'-10"



Scale 1/8" = 1'-0"

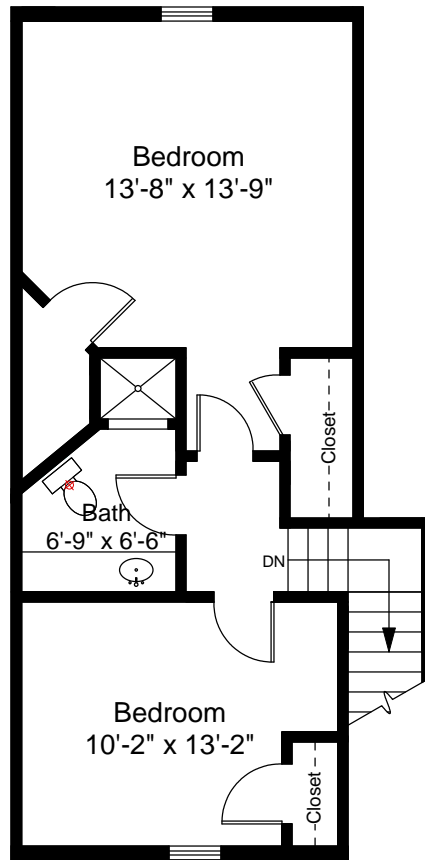
2



Completed: September, 2009

Note: Dimensions are not guaranteed and are provided for informational purposes only.

**NEW ENGLAND**  
 FLOOR PLANS  
 & PHOTOGRAPHY  
 (800) 328-0217

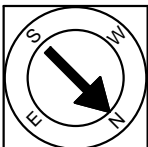


Third Floor Plan  
Ceiling Height = 8'-0"



Scale 1/8" = 1'-0"

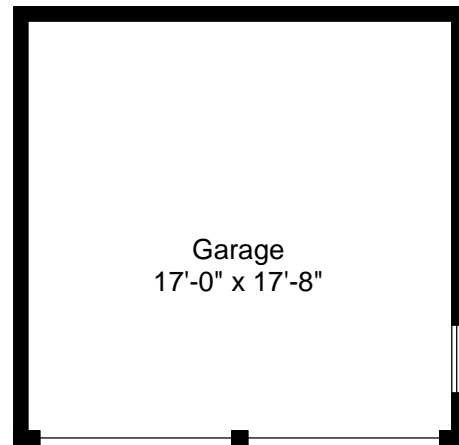
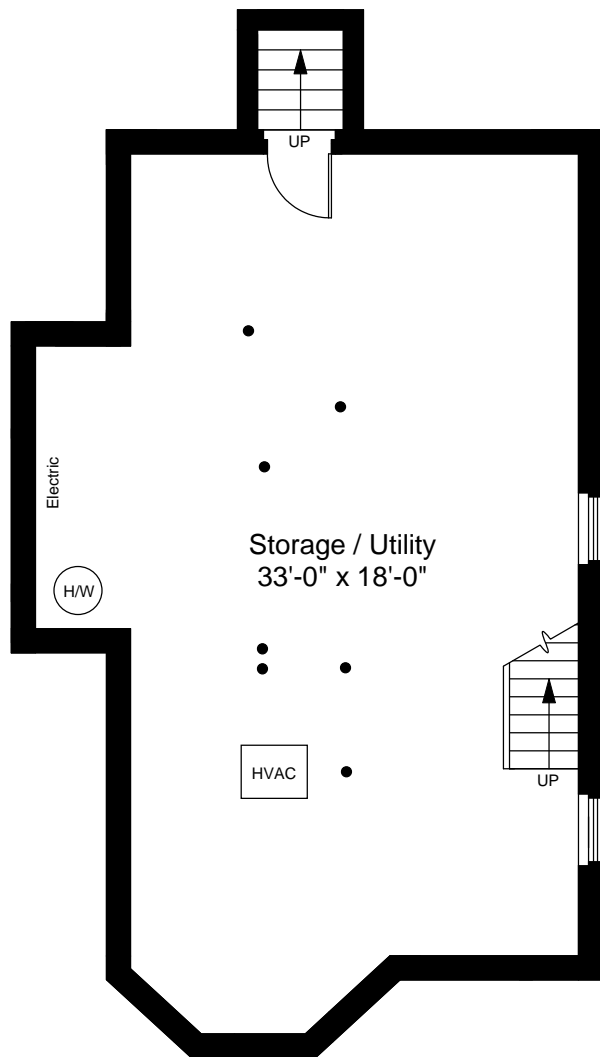
3



Completed: September, 2009

Note: Dimensions are not guaranteed and are provided for informational purposes only.

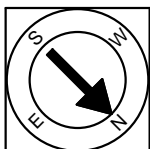
  
**NEW ENGLAND**  
 FLOOR PLANS  
 & PHOTOGRAPHY  
 (800) 328-0217



Garage Floor Plan



Scale 1/8" = 1'-0"



Completed: September, 2009

Note: Dimensions are not guaranteed and are provided for informational purposes only.