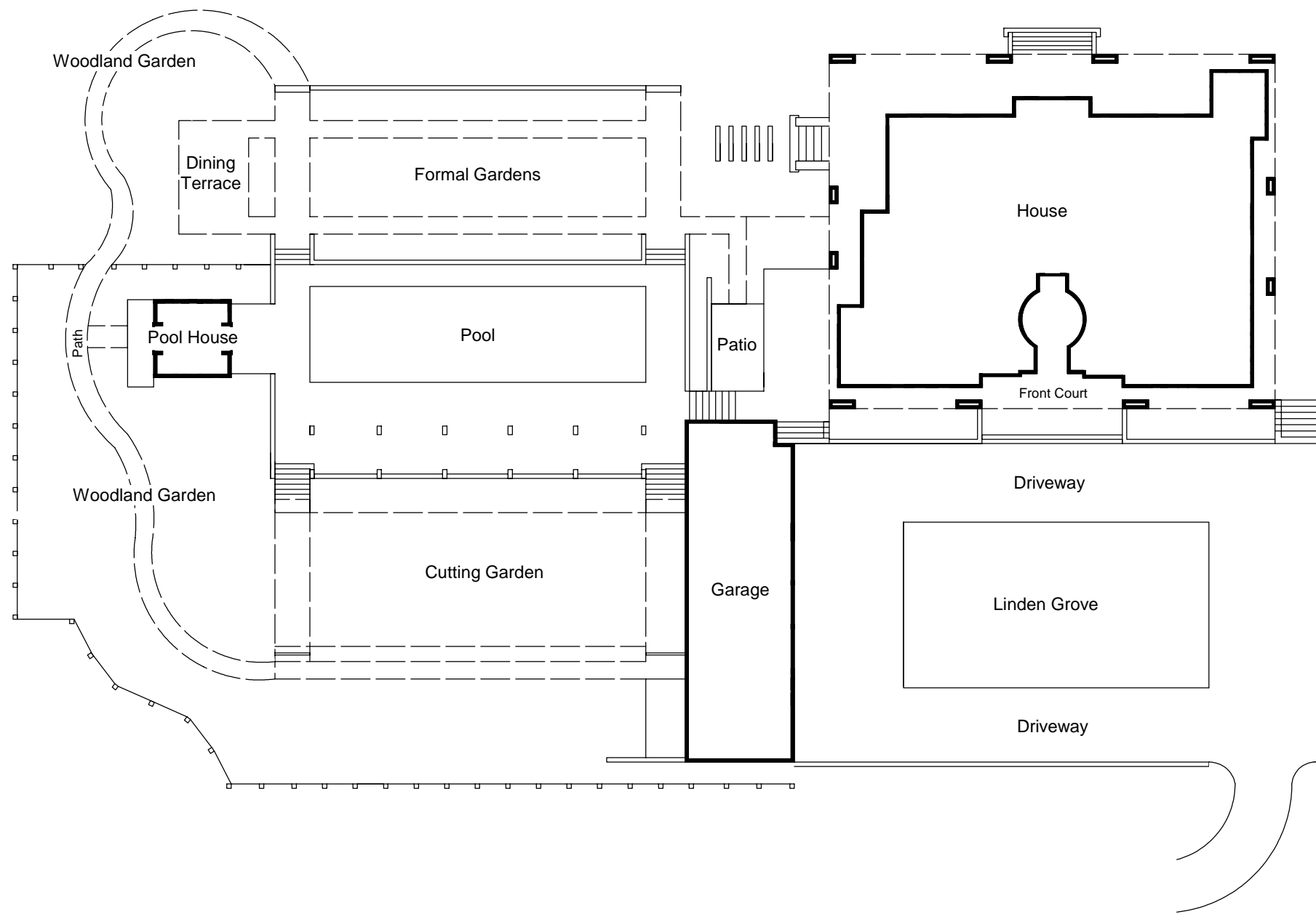
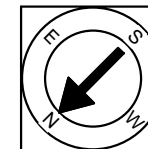


34 Mayflower Lane
Duxbury, MA 02332



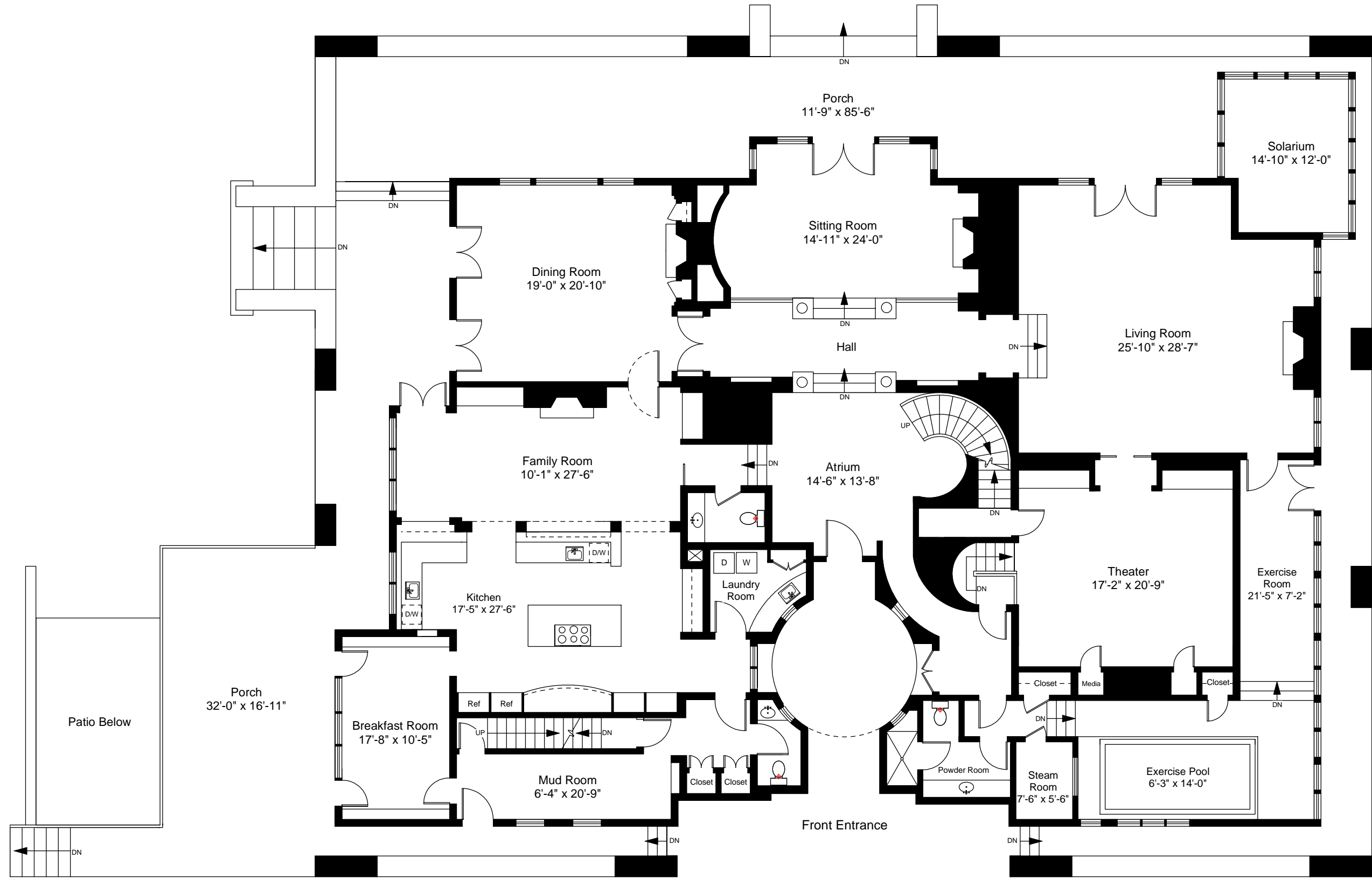
Scale 1/8" = 1'-0"



Note: Dimensions are not guaranteed and are provided for informational purposes only.

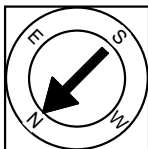
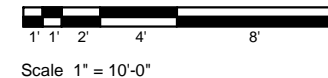


Completed: July, 2007



First Floor Plan
Ceiling Height = 10'-0"

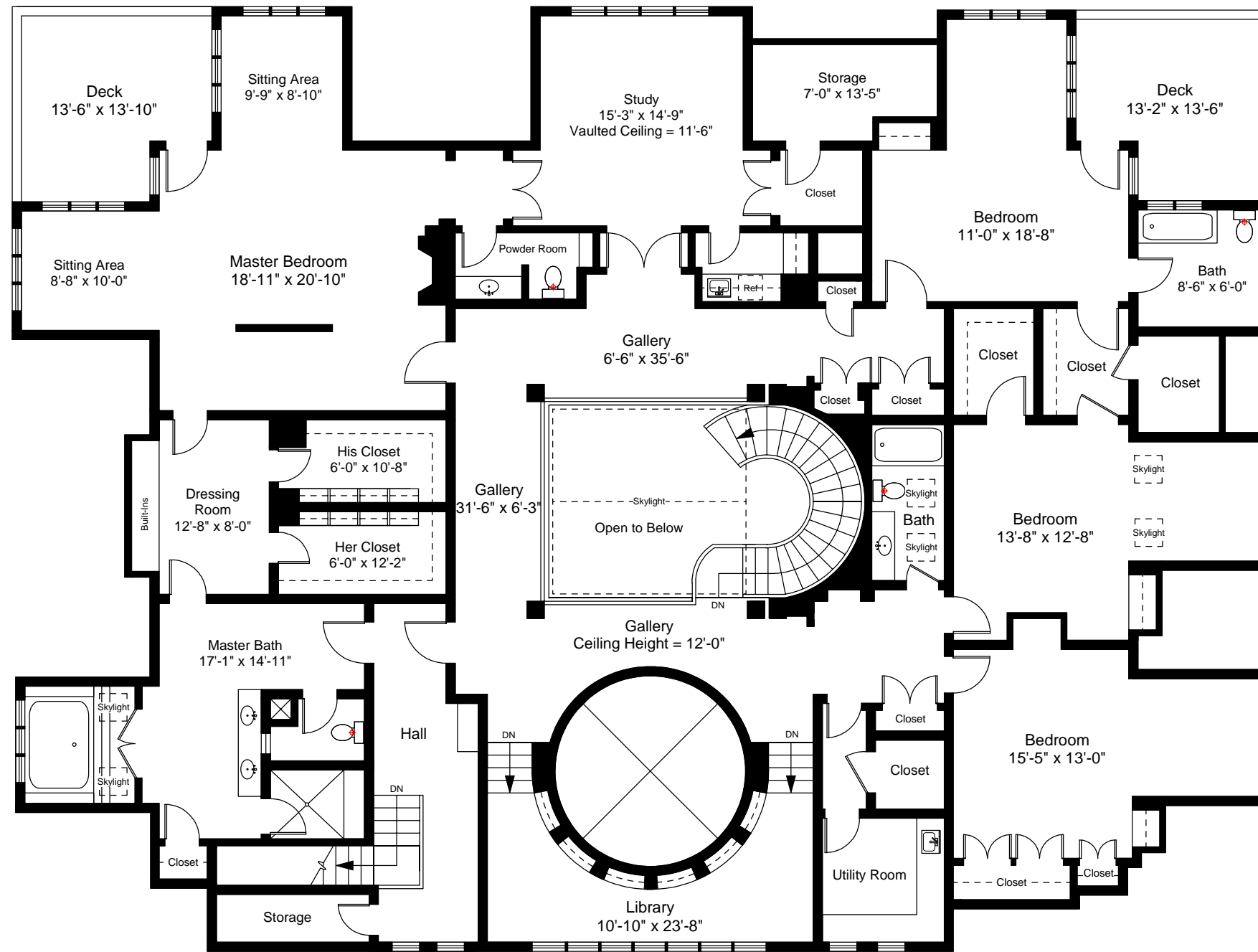
34 Mayflower Lane
Duxbury, MA 02332



Note: Dimensions are not guaranteed and are provided for informational purposes only.

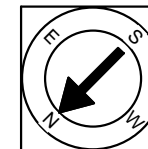
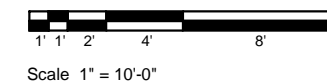


Completed: July, 2007



Second Floor Plan
Ceiling Height = 10'-6"

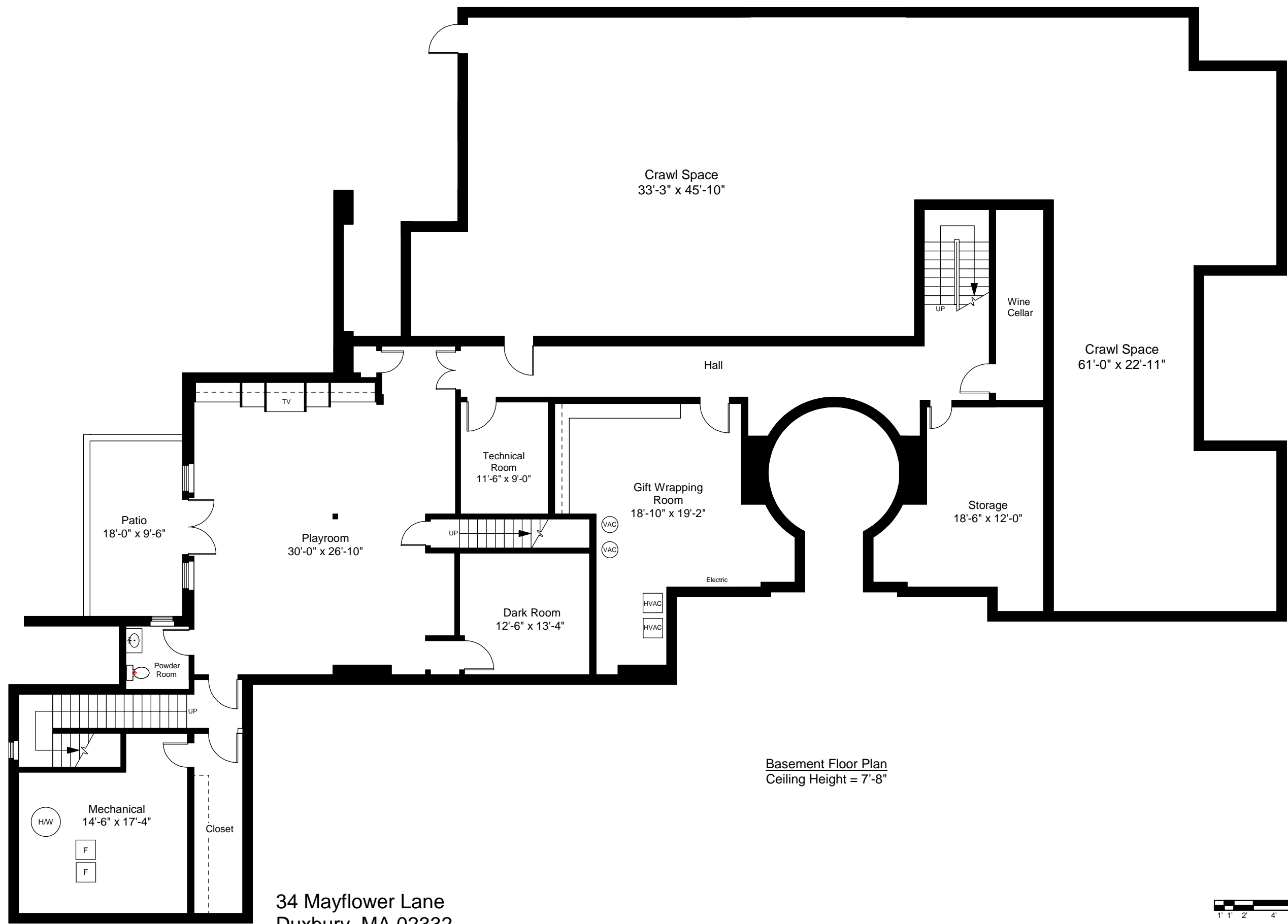
34 Mayflower Lane
Duxbury, MA 02332



Note: Dimensions are not guaranteed and are provided for informational purposes only.

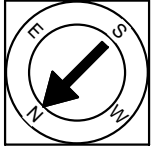
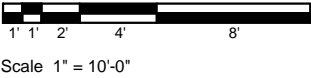


Completed: July, 2007



Basement Floor Plan
Ceiling Height = 7'-8"

34 Mayflower Lane
Duxbury, MA 02332



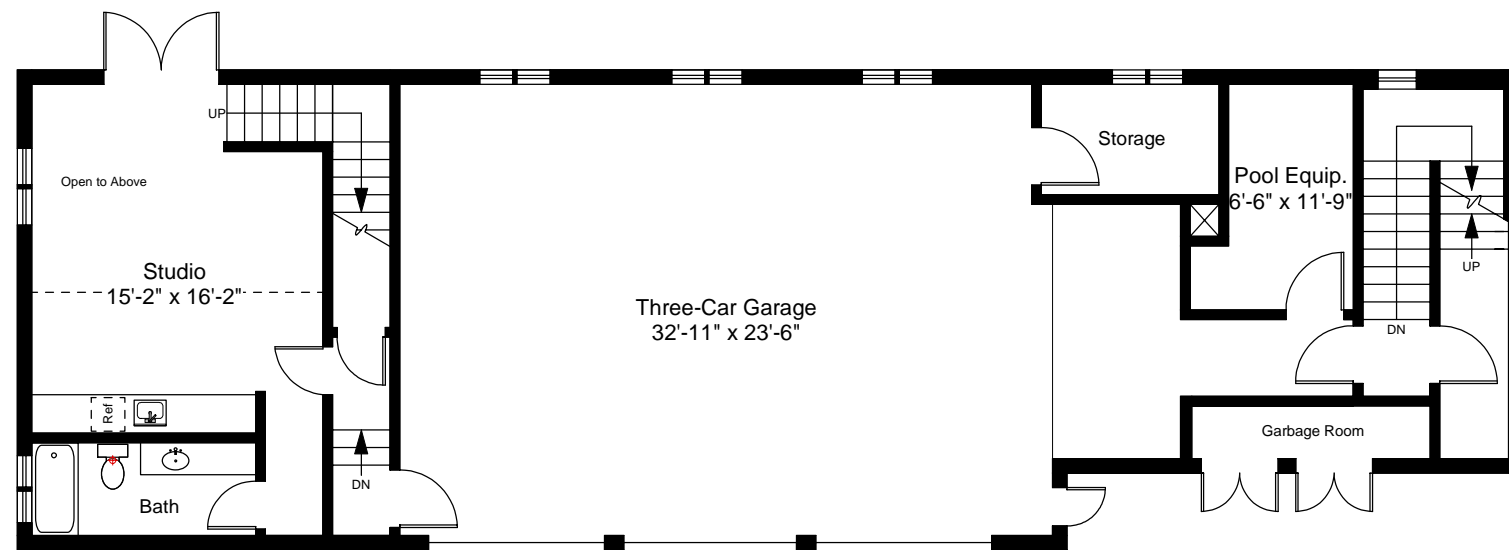
Note: Dimensions are not guaranteed and are provided for informational purposes only.



Completed: July, 2007

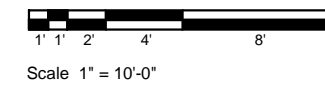


Second Floor Garage Plan
Ceiling Height = 8'-10"



First Floor Garage Plan
Ceiling Height = 14'-0"

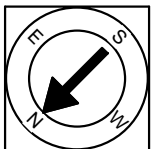
34 Mayflower Lane
Duxbury, MA 02332

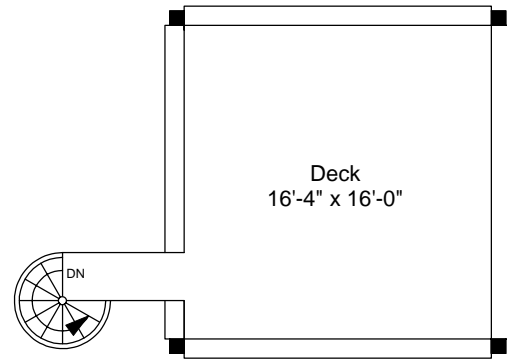


Completed: July, 2007

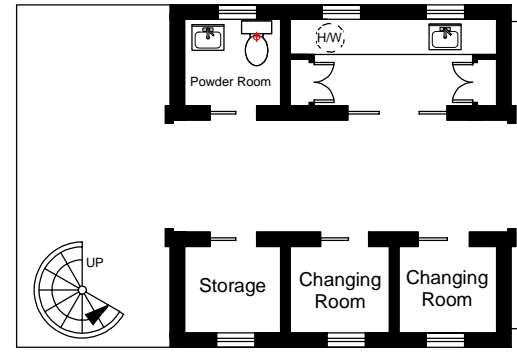


Note: Dimensions are not guaranteed and are provided for informational purposes only.

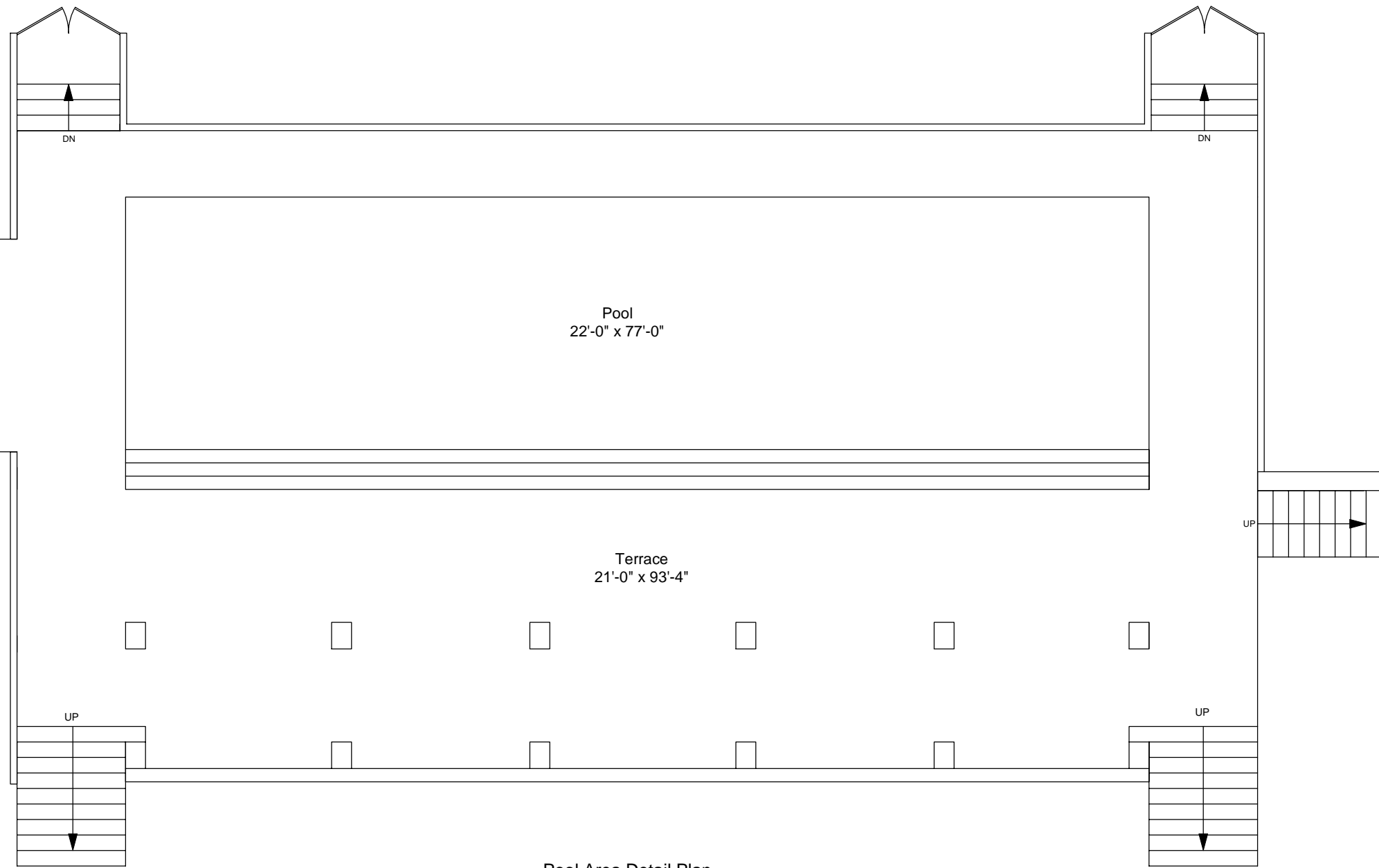




Pool House Second Floor Plan

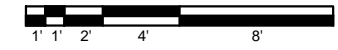


Pool House First Floor Plan

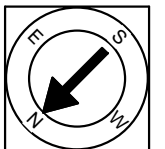


Pool Area Detail Plan

34 Mayflower Lane
Duxbury, MA 02332



Scale 1" = 10'-0"



Note: Dimensions are not guaranteed and are provided for informational purposes only.



Completed: July, 2007