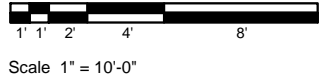
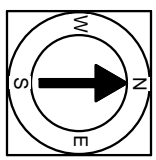


**First Floor Plan**  
Ceiling Height = 8'-4"



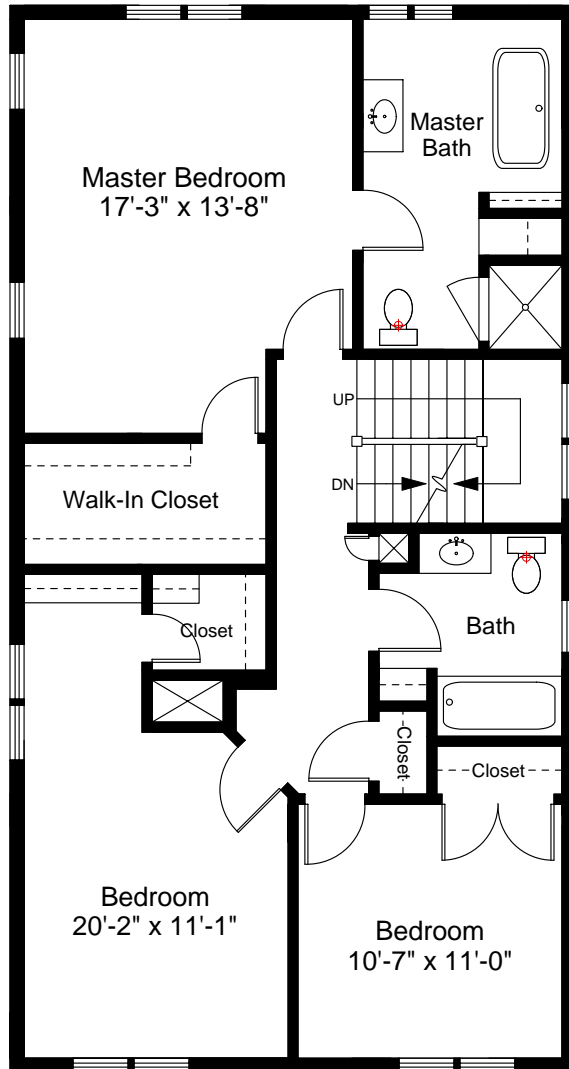
1



Completed: June, 2008

Note: Dimensions are not guaranteed and are provided for informational purposes only.

**NEW ENGLAND**  
FLOOR PLANS  
& PHOTOGRAPHY  
(800) 328-0217

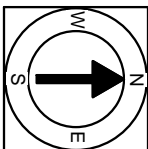


**Second Floor Plan**  
 Ceiling Height = 7'-10"



Scale 1/8" = 1'-0"

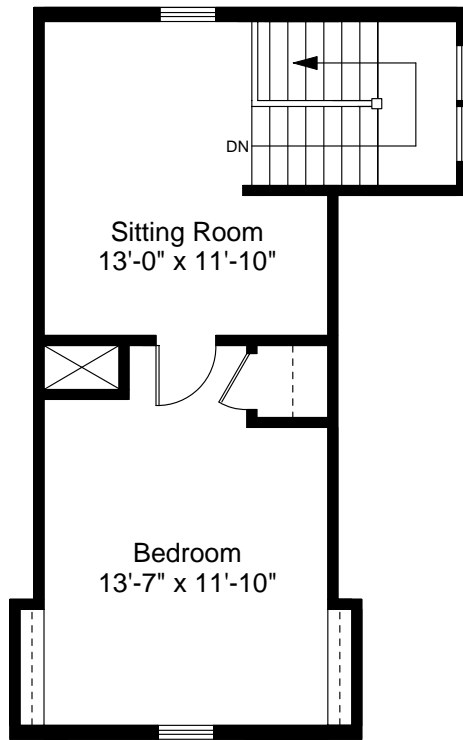
2



Completed: June, 2008

Note: Dimensions are not guaranteed and are provided for informational purposes only.

**NEW ENGLAND**  
 FLOOR PLANS  
 & PHOTOGRAPHY  
 (800) 328-0217

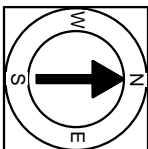


Third Floor Plan  
Ceiling Height = 6'-10"



Scale 1/8" = 1'-0"

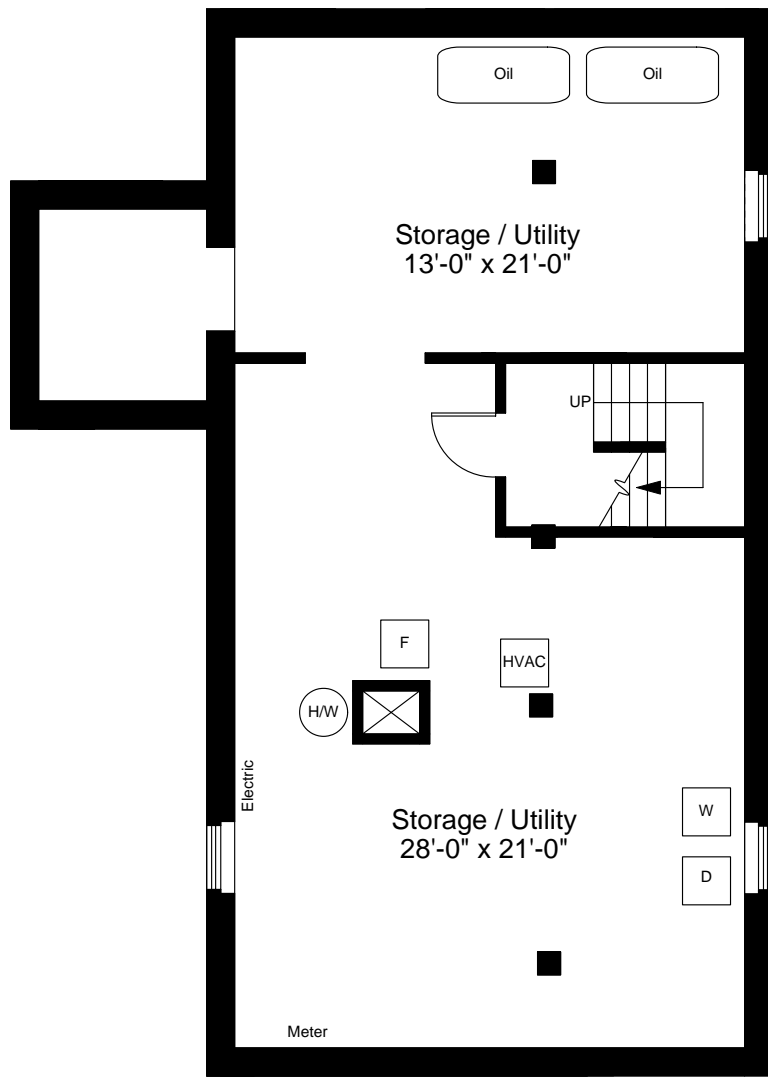
3



Completed: June, 2008

Note: Dimensions are not guaranteed and are provided for informational purposes only.

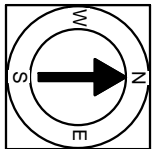
  
NEW ENGLAND  
— FLOOR PLANS —  
& PHOTOGRAPHY  
(800) 328-0217



**Basement Floor Plan**  
 Ceiling Height = 7'-0"



Scale 1/8" = 1'-0"



Completed: June, 2008  
 Note: Dimensions are not guaranteed and are provided for informational purposes only.