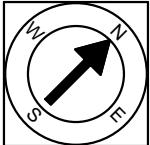


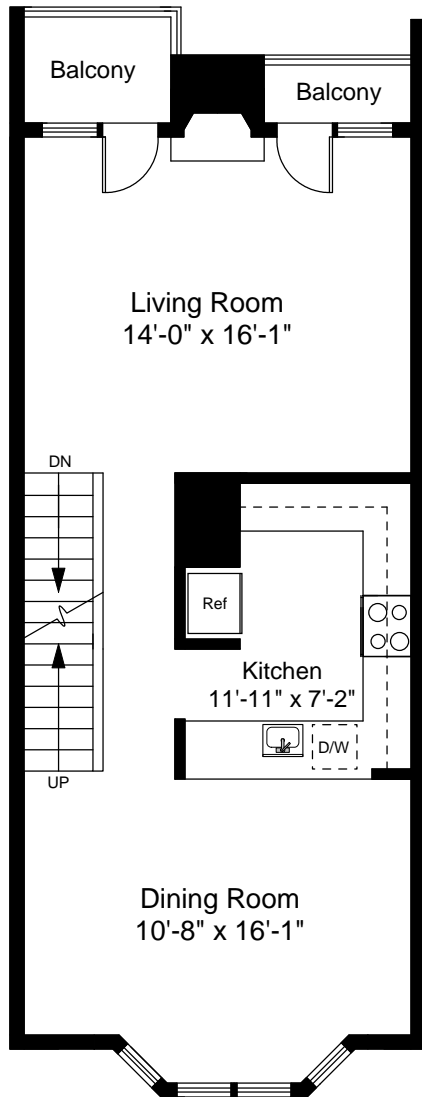
1



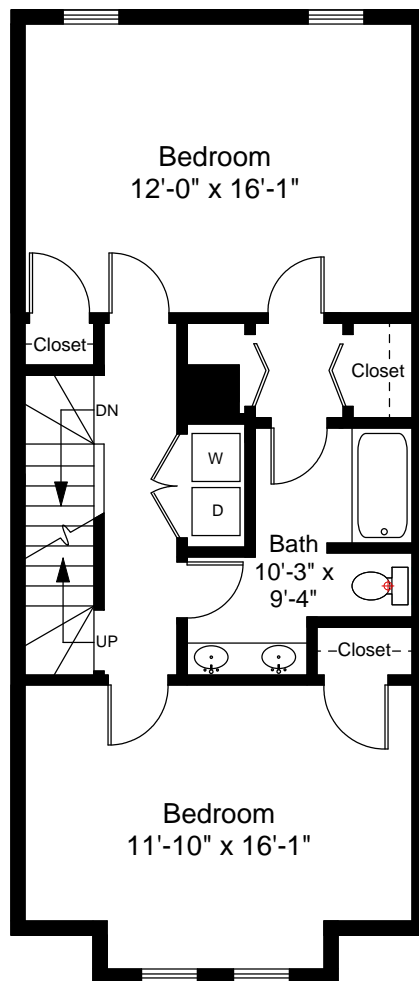
Completed: April, 2010

Note: Dimensions are not guaranteed and are provided for informational purposes only.

NEW ENGLAND
FLOOR PLANS
& PHOTOGRAPHY
(800) 328-0217



Second Floor Plan
Ceiling Height = 7'-11"



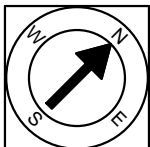
Third Floor Plan
Ceiling Height = 7'-11"

39-D Bellis Circle
Cambridge, MA 02140



Scale 1/8" = 1'-0"

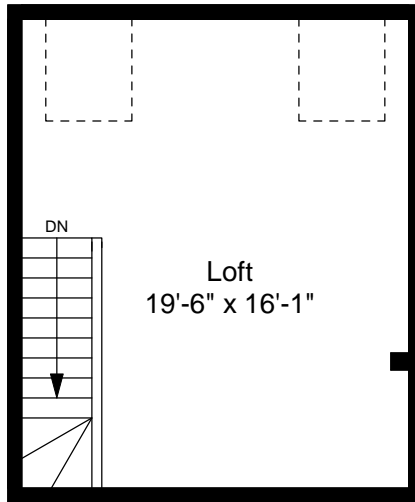
2



Completed: April, 2010

Note: Dimensions are not guaranteed and are provided for informational purposes only.


NEW ENGLAND
FLOOR PLANS
& PHOTOGRAPHY
(800) 328-0217



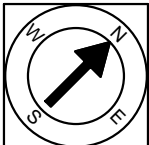
Fourth Floor Plan
Vaulted Ceiling Height = 10'-3"

39-D Bellis Circle
Cambridge, MA 02140



Scale 1/8" = 1'-0"

3



Completed: April, 2010

Note: Dimensions are not guaranteed and are provided for informational purposes only.


NEW ENGLAND
— FLOOR PLANS —
& PHOTOGRAPHY
(800) 328-0217