

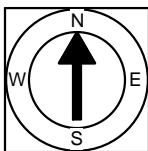
First Floor Plan
 Ceiling Height = 8'-11"

3 St. Paul Street
 Cambridge, MA 02139



Scale 1/8" = 1'-0"

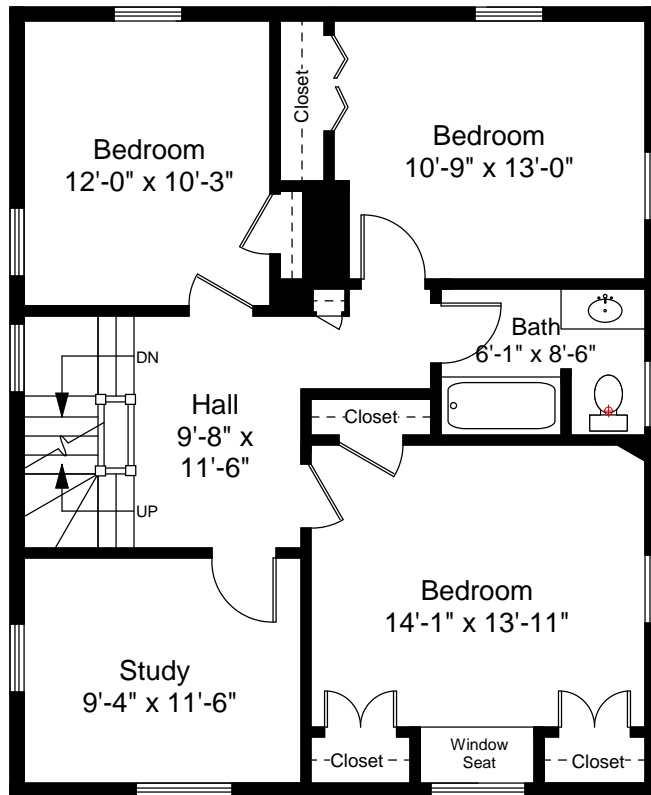
1



Completed: October, 2009

Note: Dimensions are not guaranteed and are provided for informational purposes only.

NEW ENGLAND
 FLOOR PLANS
 & PHOTOGRAPHY
 (800) 328-0217



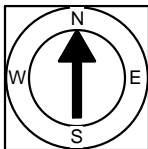
Second Floor Plan
Ceiling Height = 8'-9"

3 St. Paul Street
Cambridge, MA 02139



Scale 1/8" = 1'-0"

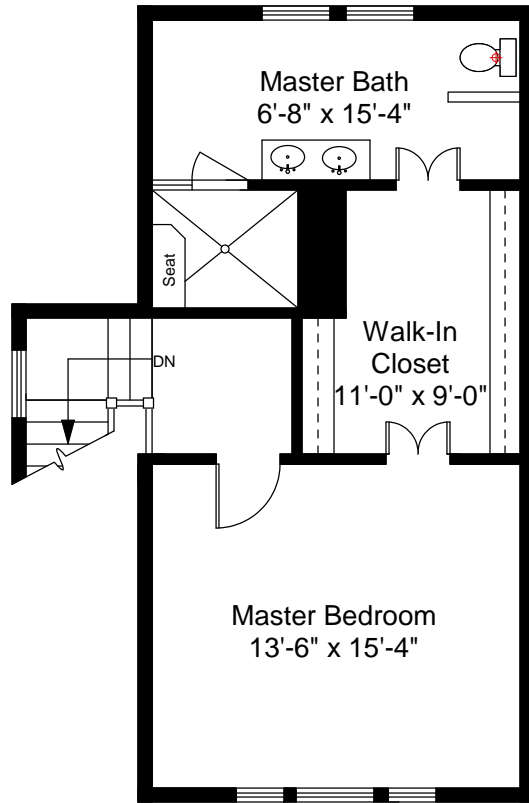
2



Completed: October, 2009

Note: Dimensions are not guaranteed and are provided for informational purposes only.

NEW ENGLAND
FLOOR PLANS
& PHOTOGRAPHY
(800) 328-0217



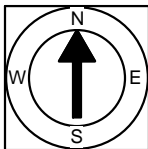
Third Floor Plan
Ceiling Height = 8'-1"

3 St. Paul Street
Cambridge, MA 02139



Scale 1/8" = 1'-0"

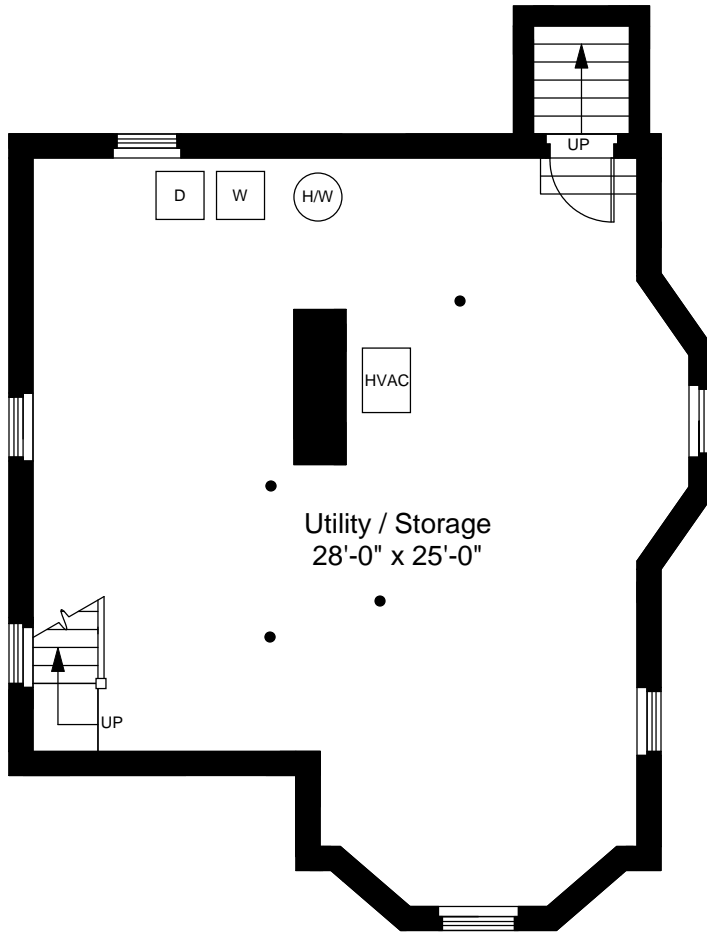
3



Completed: October, 2009

Note: Dimensions are not guaranteed and are provided for informational purposes only.

NEW ENGLAND
— FLOOR PLANS —
& PHOTOGRAPHY
(800) 328-0217



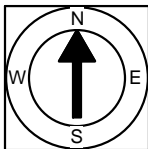
Basement Floor Plan
 Ceiling Height = 7'-6"

3 St. Paul Street
 Cambridge, MA 02139



Scale 1/8" = 1'-0"

4



Completed: October, 2009

Note: Dimensions are not guaranteed and are provided for informational purposes only.

NEW ENGLAND
 FLOOR PLANS
 & PHOTOGRAPHY
 (800) 328-0217