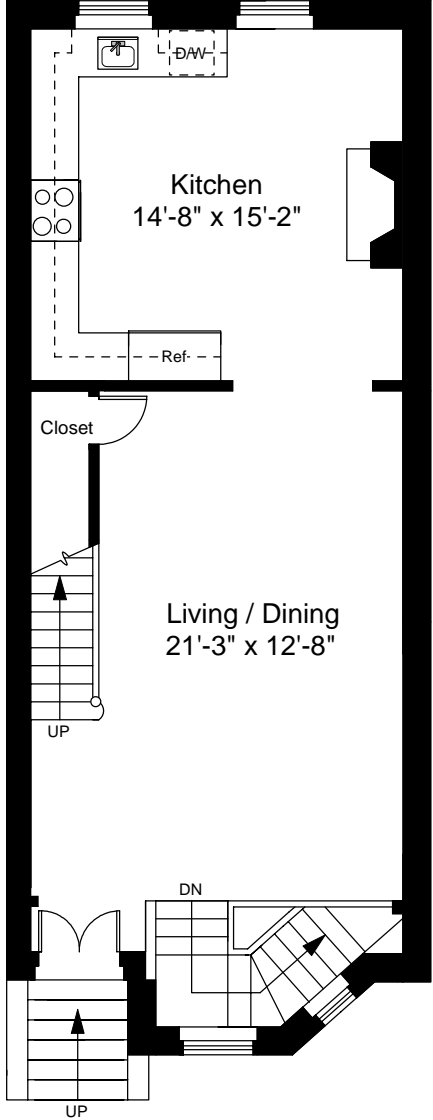


Garden Level Floor Plan
Ceiling Height = 7'-6"

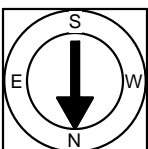


First Floor Plan
Ceiling Height = 9'-3"



Scale 1/8" = 1'-0"

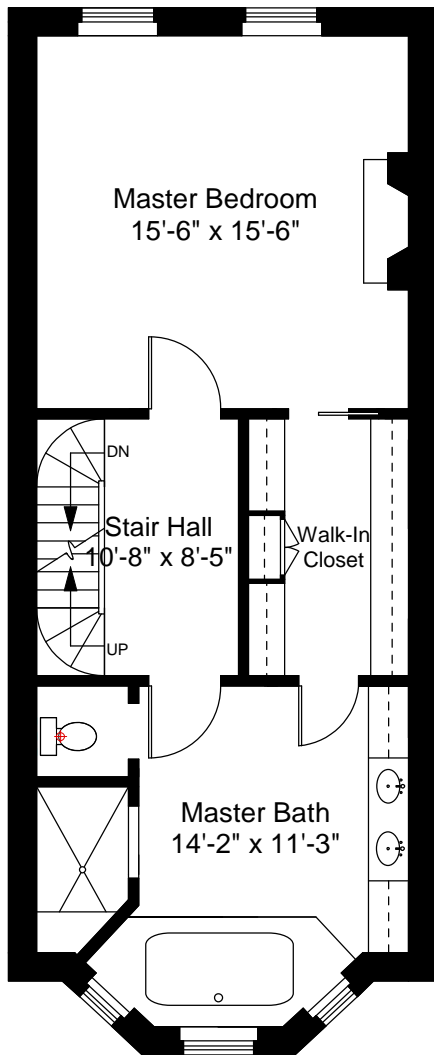
1



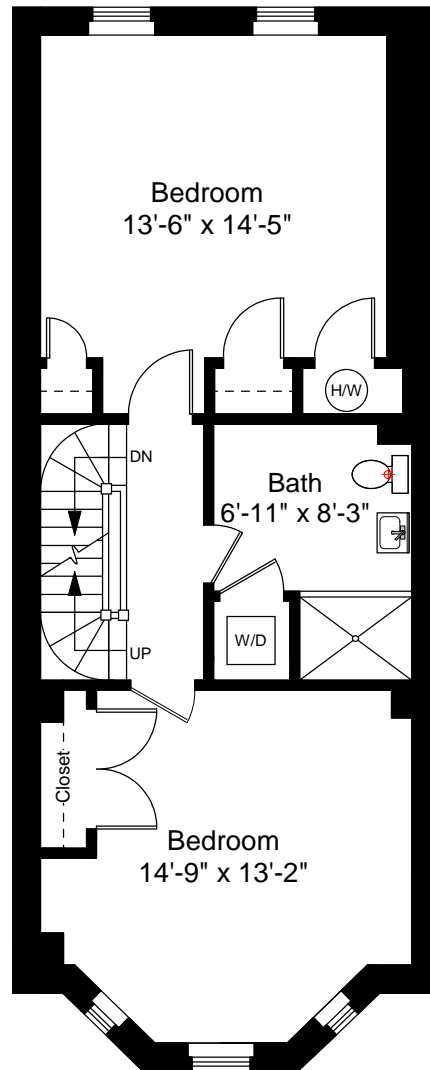
Completed: September, 2008

Note: Dimensions are not guaranteed and are provided for informational purposes only.

NEW ENGLAND
FLOOR PLANS
& PHOTOGRAPHY
(800) 328-0217



Second Floor Plan
Ceiling Height = 10'-0"

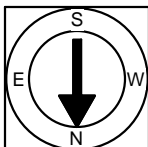


Third Floor Plan
Ceiling Height = 9'-3"



Scale 1/8" = 1'-0"

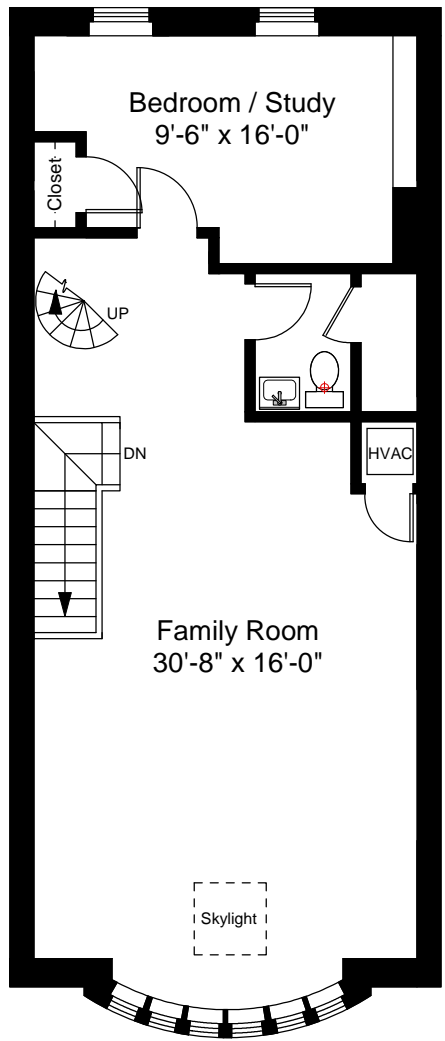
2



Completed: September, 2008

Note: Dimensions are not guaranteed and are provided for informational purposes only.

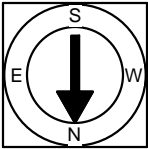
NEW ENGLAND
— FLOOR PLANS —
& PHOTOGRAPHY
(800) 328-0217



Fourth Floor Plan
 Max. Ceiling Height = 9'-10"



Scale 1/8" = 1'-0"



Completed: September, 2008
 Note: Dimensions are not guaranteed and are provided for informational purposes only.