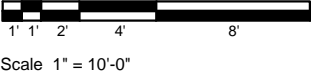
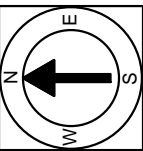
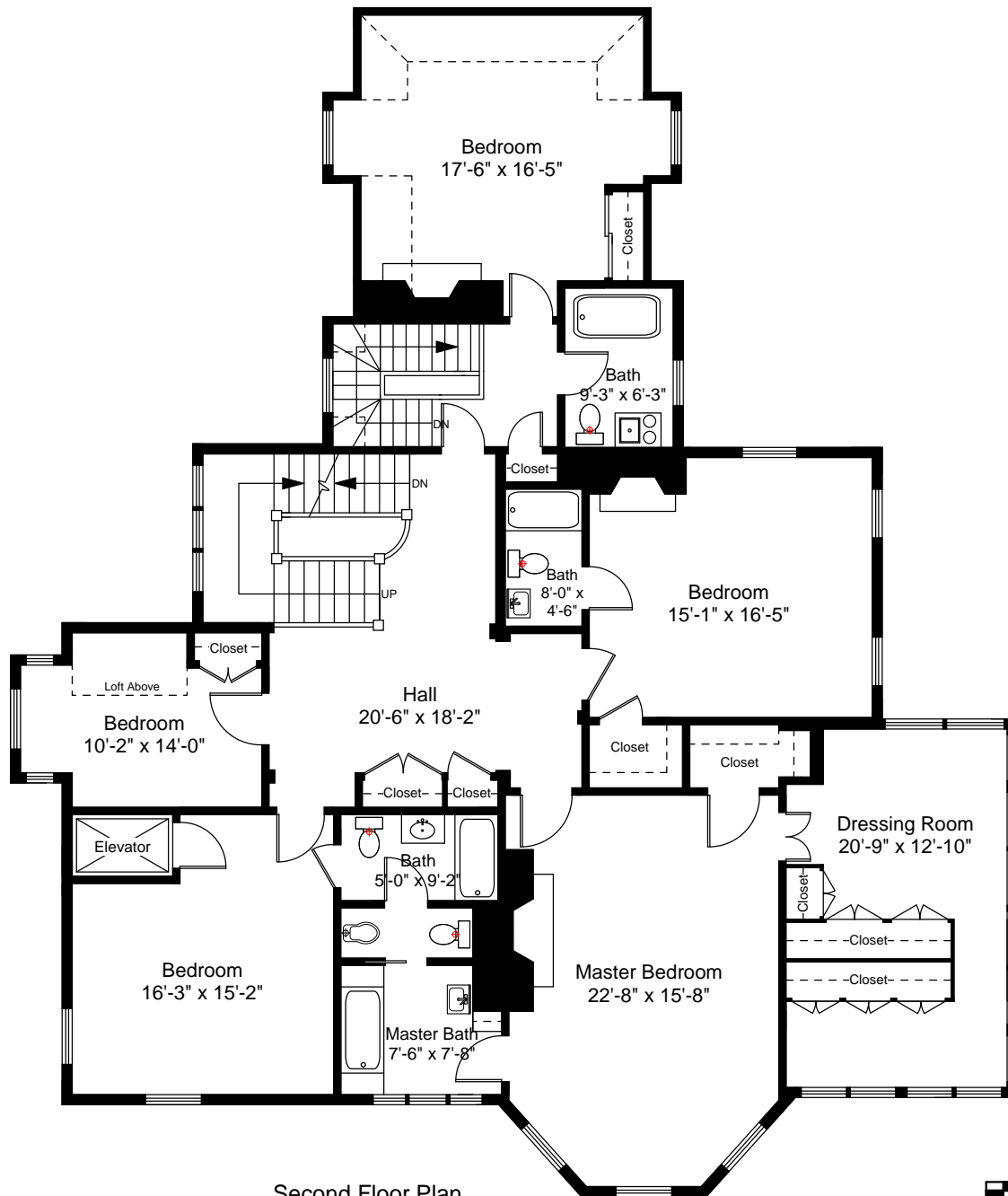


First Floor Plan
Ceiling Height = 11'-0"

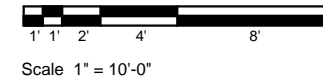


Completed: July, 2009
 Note: Dimensions are not guaranteed and are provided for informational purposes only.

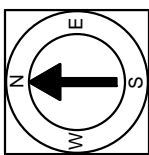


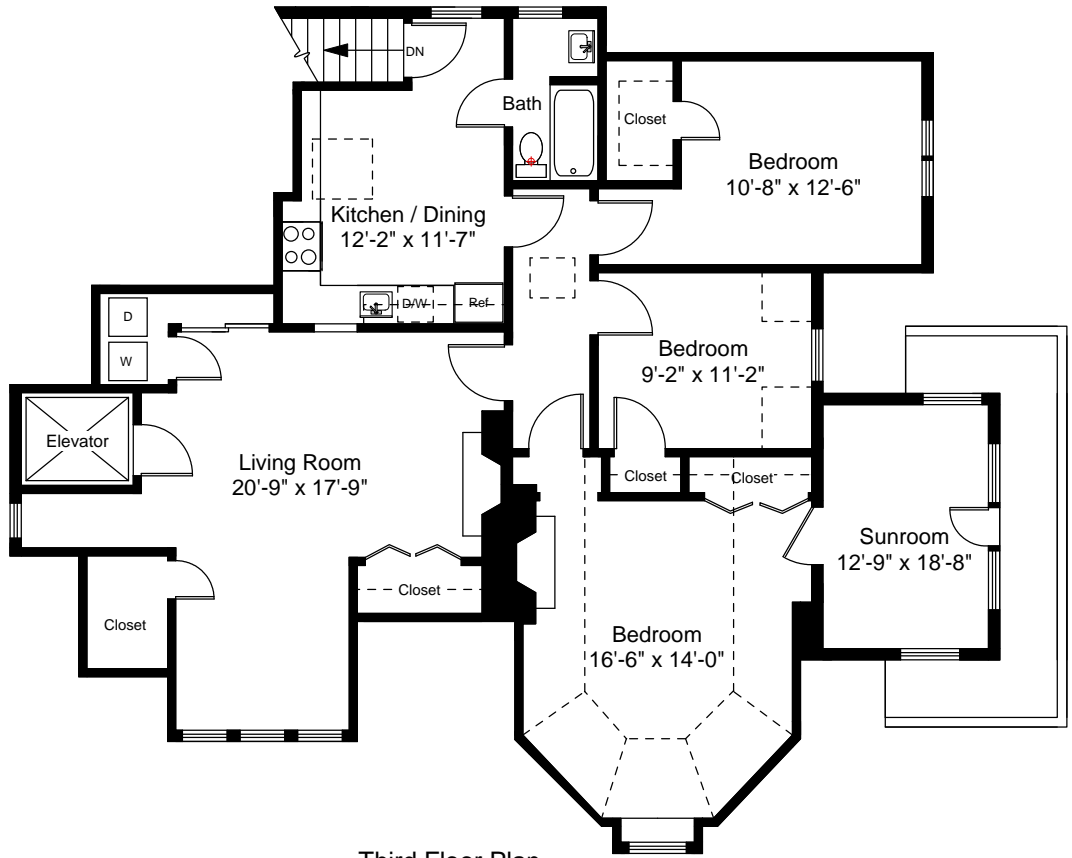


Second Floor Plan
Ceiling Height = 9'-0"

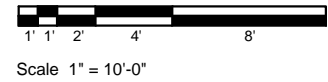


Completed: July, 2009
 Note: Dimensions are not guaranteed and are provided for informational purposes only.

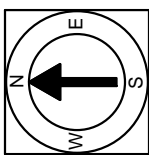


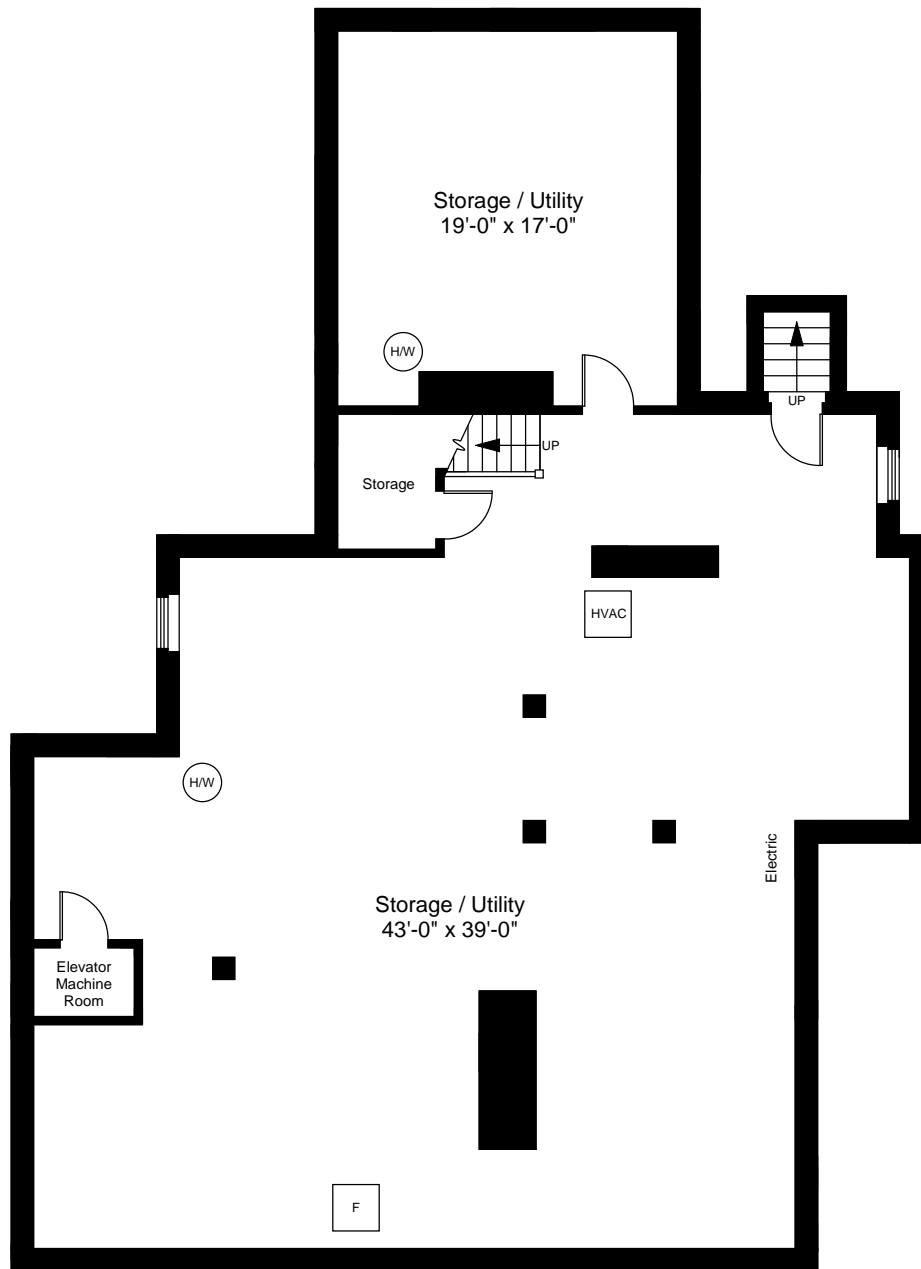


Third Floor Plan
Ceiling Height = 9'-0"

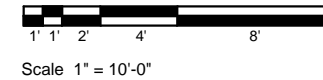


Completed: July, 2009
Note: Dimensions are not guaranteed and are provided for informational purposes only.

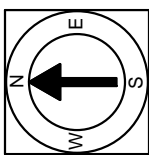


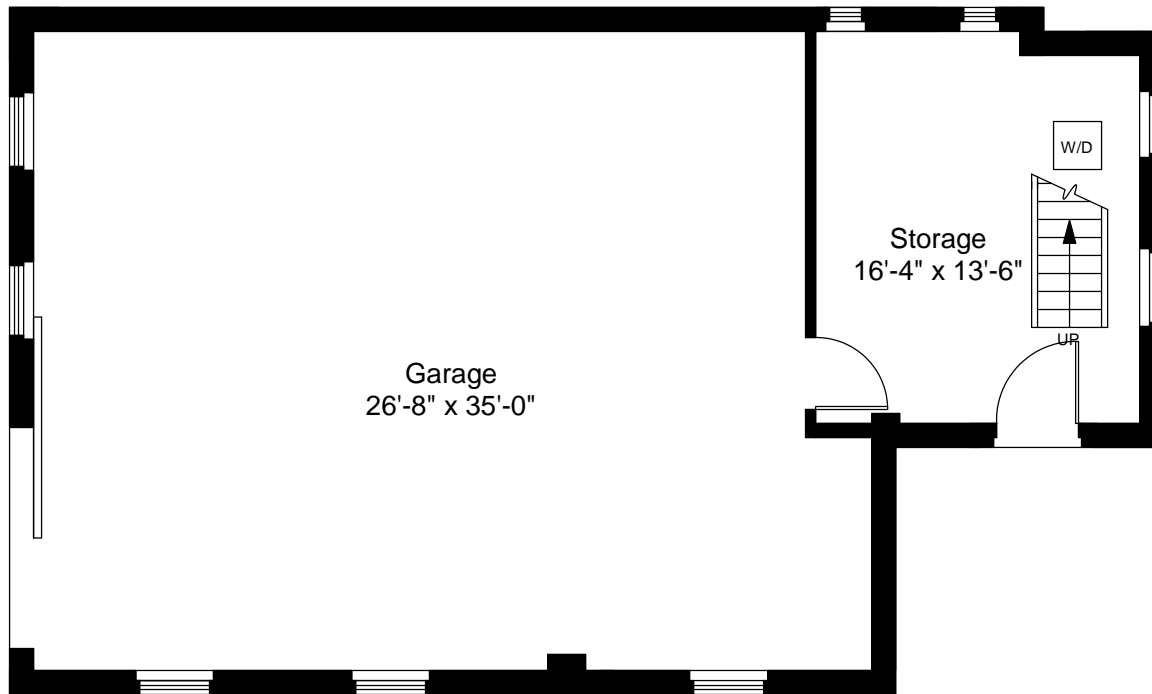


Basement Floor Plan
Ceiling Height = 8'-0"

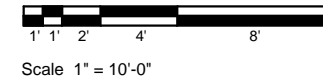


Completed: July, 2009
Note: Dimensions are not guaranteed and are provided for informational purposes only.

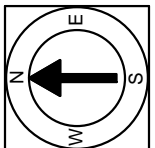


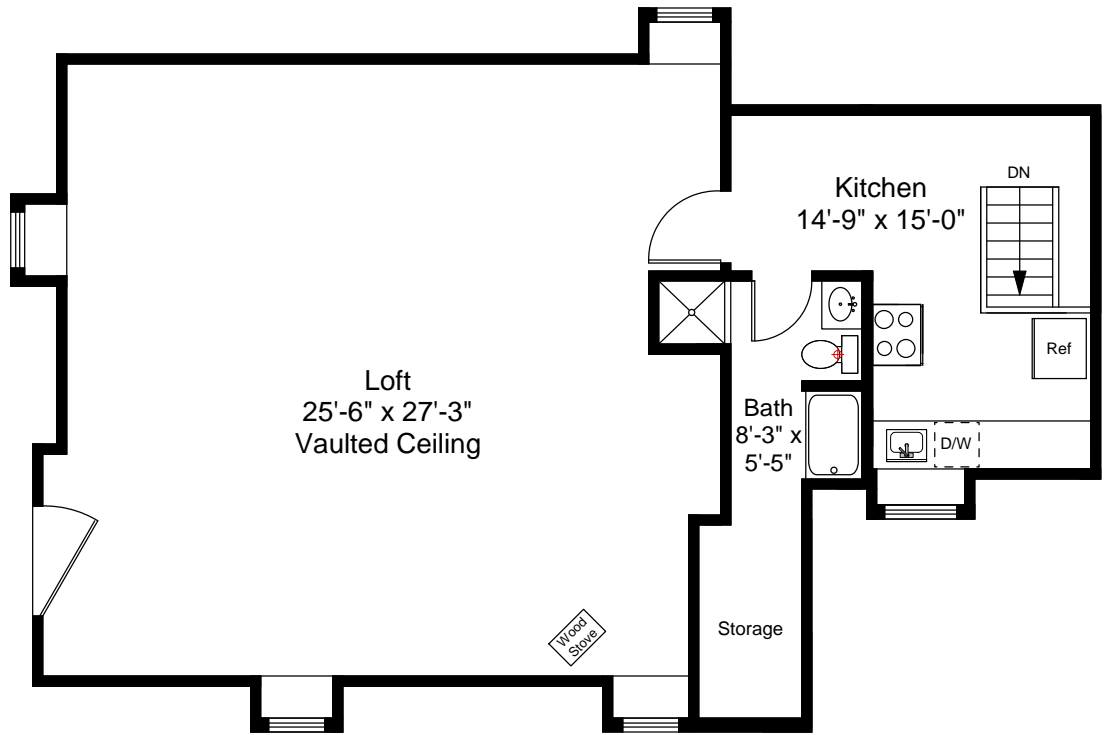


Carriage House - First Floor Plan
 Ceiling Height = 10'-9"

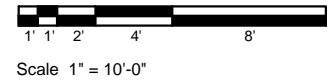


Completed: July, 2009
 Note: Dimensions are not
 guaranteed and are provided
 for informational purposes only.

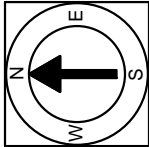


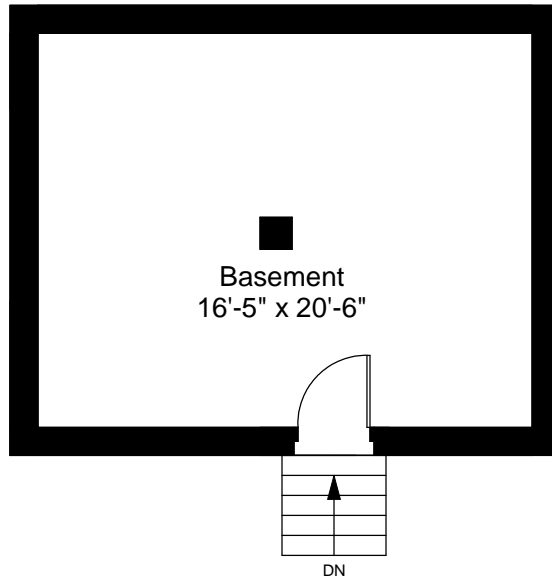


Carriage House - Second Floor Plan
Ceiling Height = 10'-9"

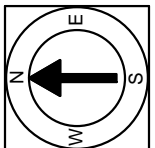
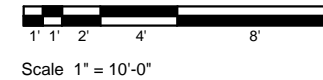


Completed: July, 2009
 Note: Dimensions are not guaranteed and are provided for informational purposes only.





Carriage House - Basement Floor Plan
Ceiling Height = 6'-0"



Completed: July, 2009
Note: Dimensions are not guaranteed and are provided for informational purposes only.