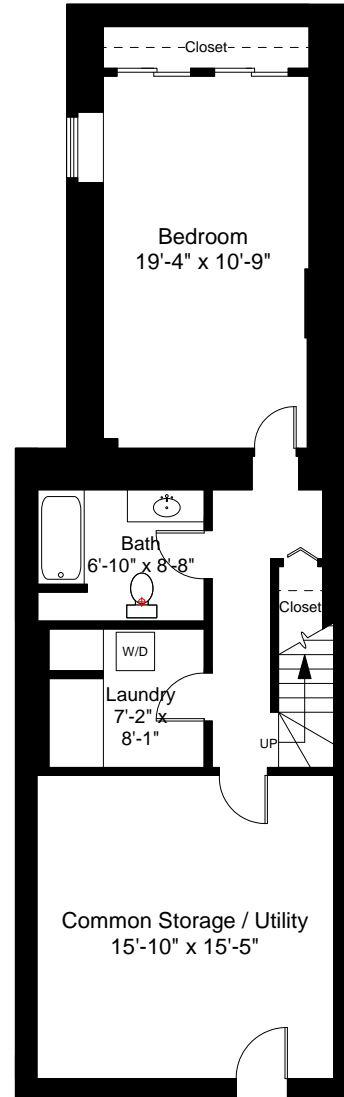


First Floor Plan
Ceiling Height = 9'-0"



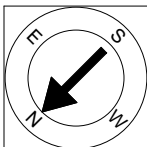
Lower Level Floor Plan
Ceiling Height = 7'-6"

46 Bigelow Street, Unit 1
Cambridge, MA 02139



Scale 1" = 10'-0"

1



Completed: April, 2010

Note: Dimensions are not guaranteed and are provided for informational purposes only.

NEW ENGLAND
FLOOR PLANS
& PHOTOGRAPHY
(800) 328-0217