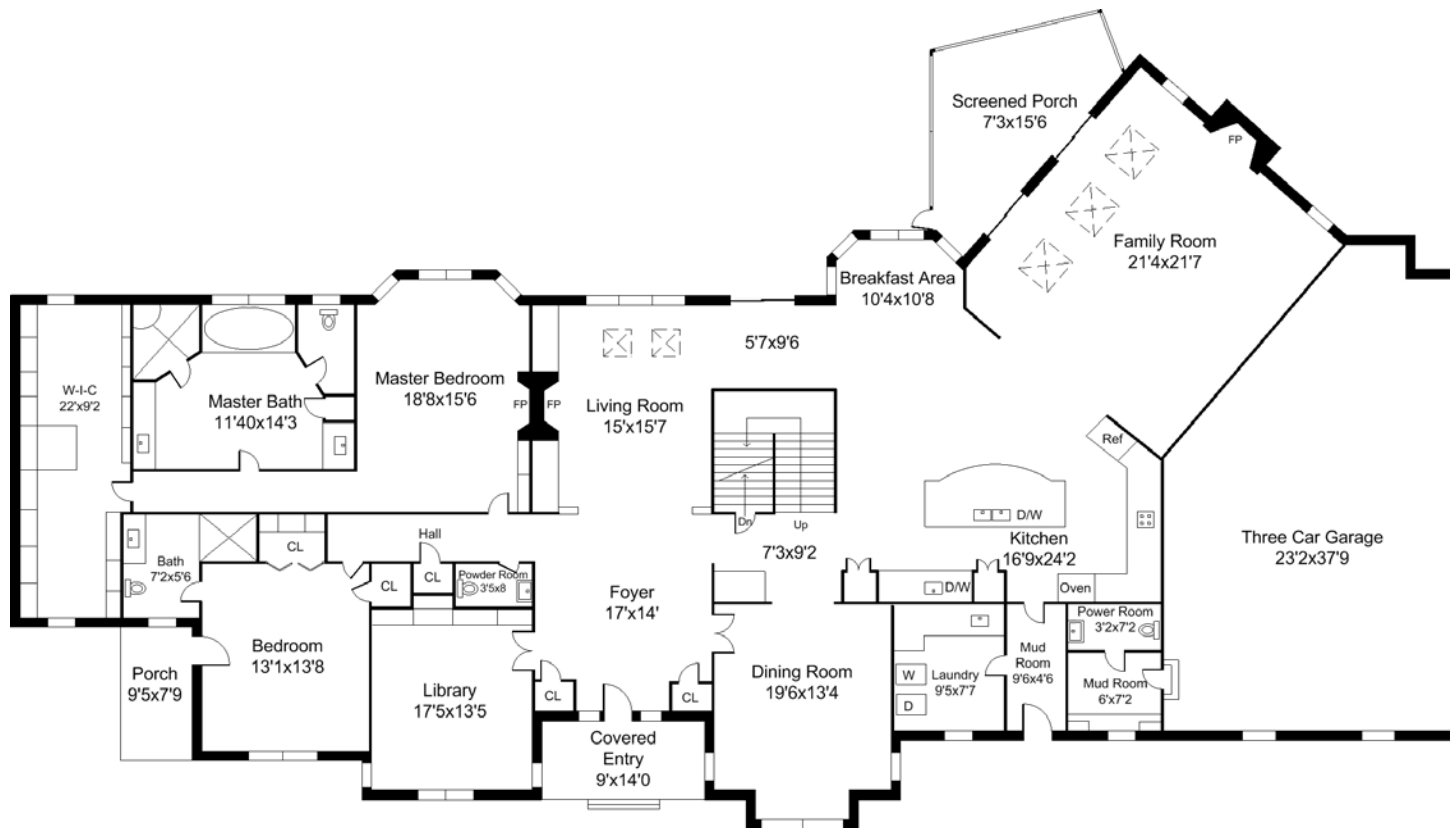
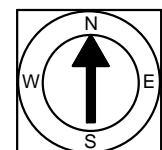


Completed: June, 2010

 Note: Dimensions are not

 guaranteed and are provided

 for informational purposes only.



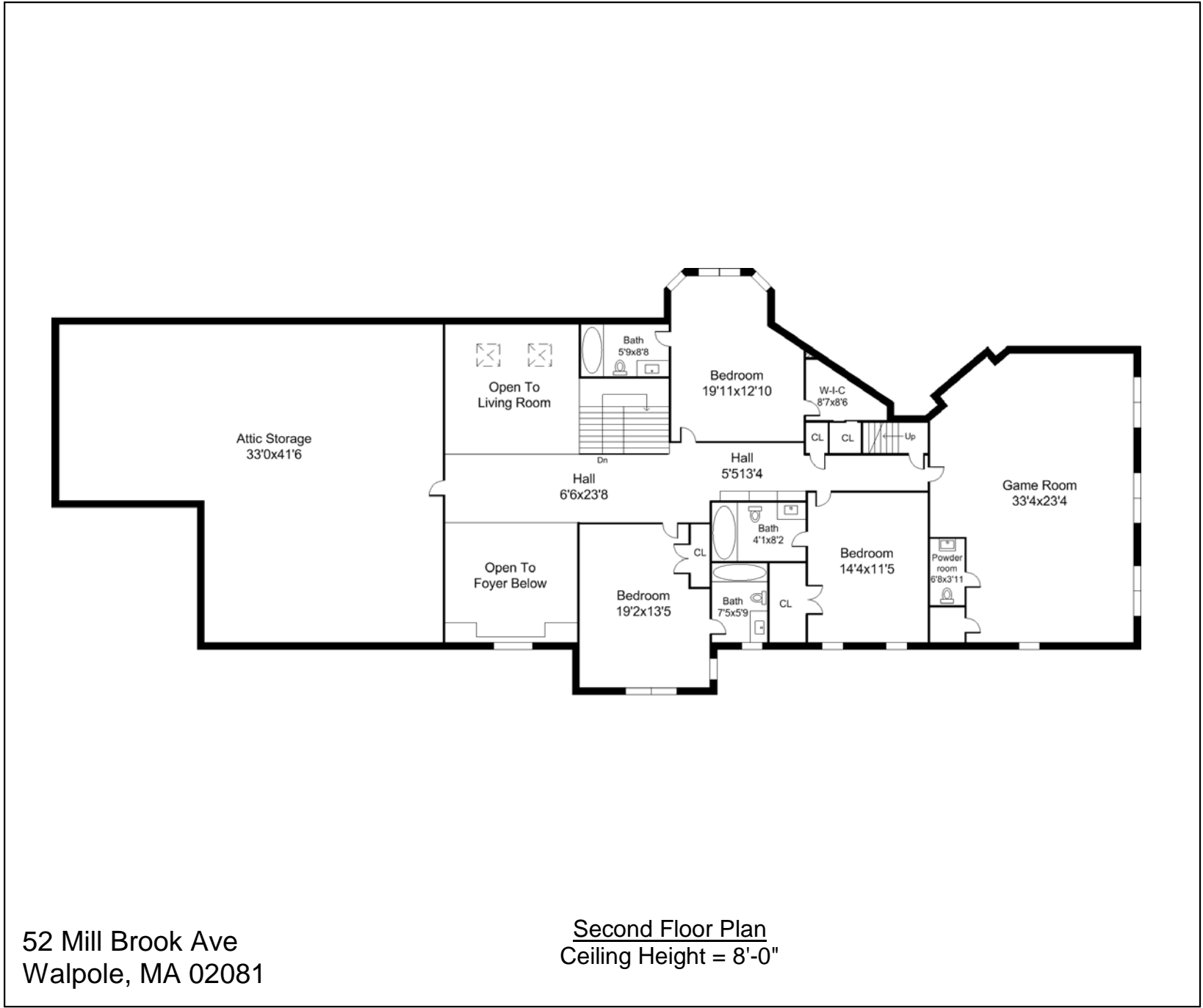
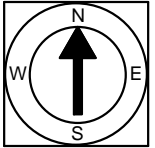
52 Mill Brook Ave

 Walpole, MA 02081

First Floor Plan

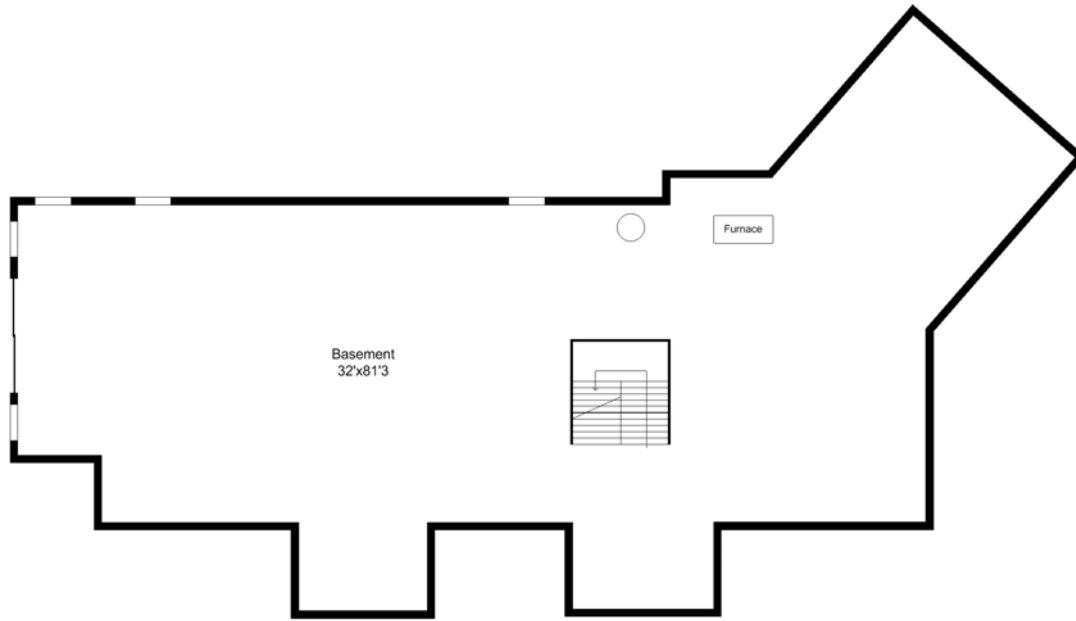
 Ceiling Height = 9'-0"

Completed: June, 2010
Note: Dimensions are not guaranteed and are provided for informational purposes only.



52 Mill Brook Ave
Walpole, MA 02081

Second Floor Plan
Ceiling Height = 8'-0"



52 Mill Brook Ave
Walpole, MA 02081

Lower Level Floor Plan
Ceiling Height = 8'-0"

Completed: June, 2010
Note: Dimensions are not
guaranteed and are provided
for informational purposes only.

