

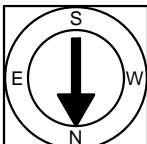
First Floor Plan
 Ceiling Height = 8'-3"

58 Roseland Street
 Cambridge, MA 02140



Scale 1/8" = 1'-0"

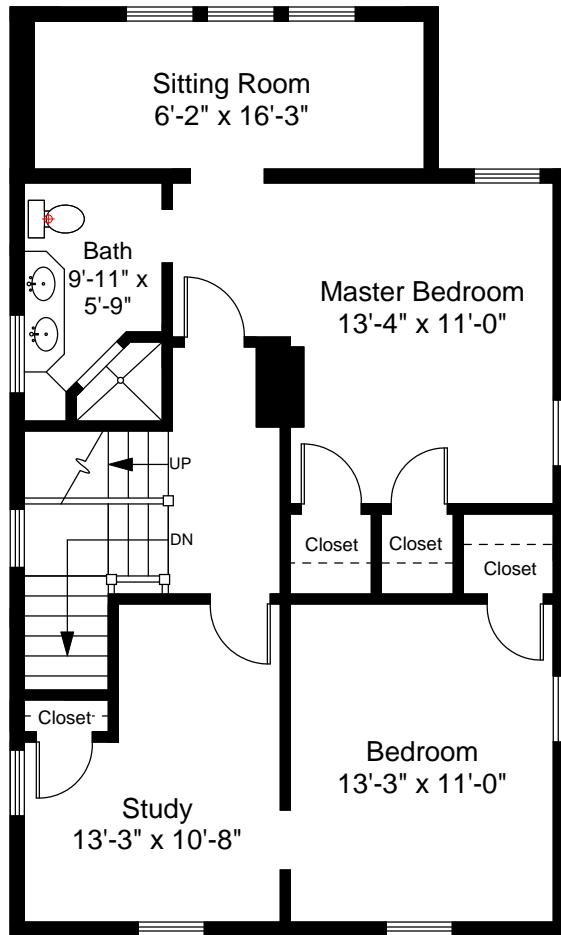
1



Completed: March, 2010

Note: Dimensions are not guaranteed and are provided for informational purposes only.

NEW ENGLAND
 FLOOR PLANS
 & PHOTOGRAPHY
 (800) 328-0217



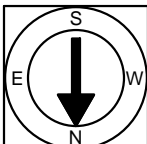
Second Floor Plan
Ceiling Height = 8'-8"

58 Roseland Street
Cambridge, MA 02140



Scale 1/8" = 1'-0"

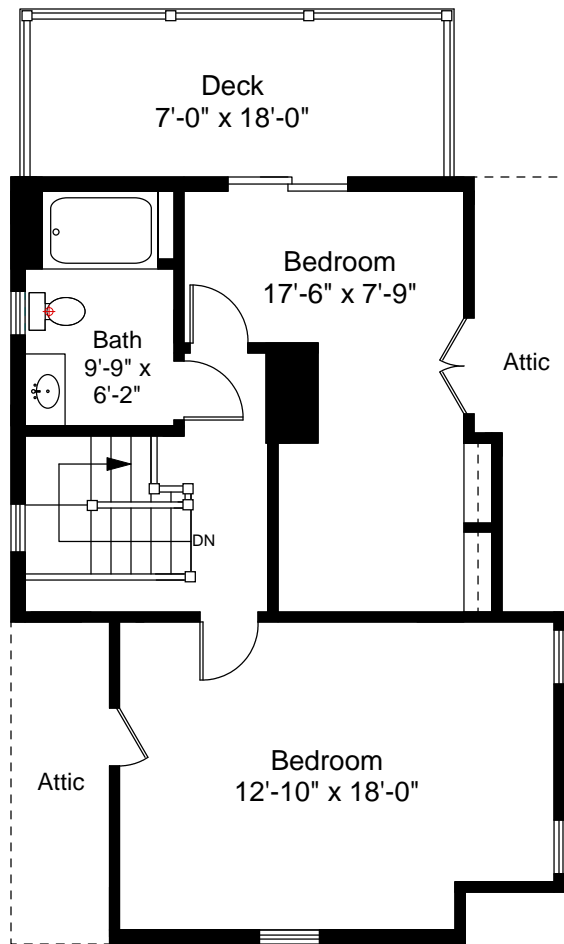
2



Completed: March, 2010

Note: Dimensions are not guaranteed and are provided for informational purposes only.

NEW ENGLAND
FLOOR PLANS
& PHOTOGRAPHY
(800) 328-0217



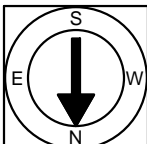
Third Floor Plan
Ceiling Height = 7'-0"

58 Roseland Street
Cambridge, MA 02140



Scale 1/8" = 1'-0"

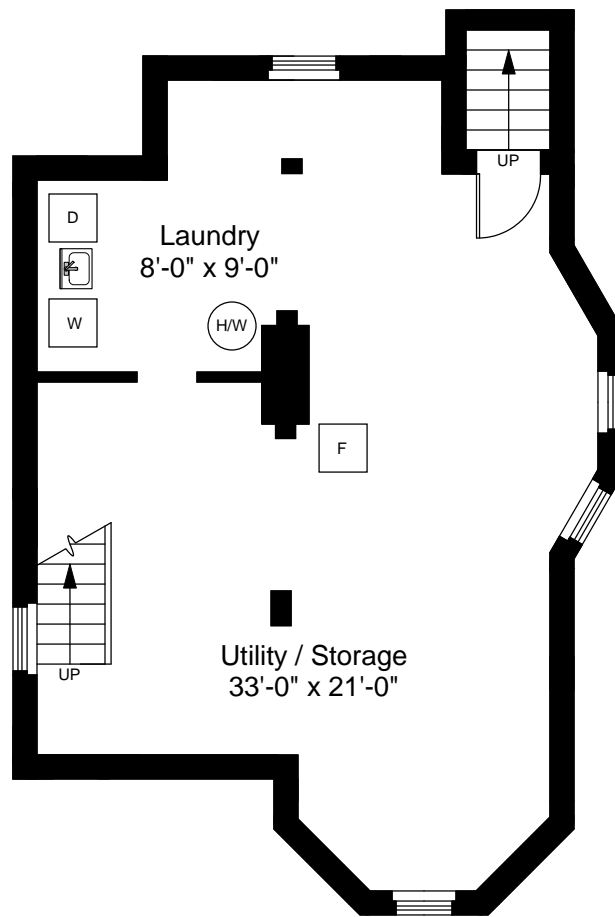
3



Completed: March, 2010

Note: Dimensions are not guaranteed and are provided for informational purposes only.


NEW ENGLAND
— FLOOR PLANS —
& PHOTOGRAPHY
(800) 328-0217



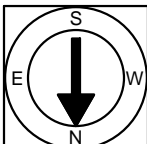
Basement Floor Plan
Ceiling Height = 6'-6"

58 Roseland Street
Cambridge, MA 02140



Scale 1/8" = 1'-0"

4



Completed: March, 2010

Note: Dimensions are not guaranteed and are provided for informational purposes only.


NEW ENGLAND
FLOOR PLANS
& PHOTOGRAPHY
(800) 328-0217