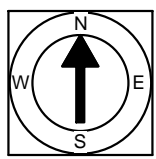


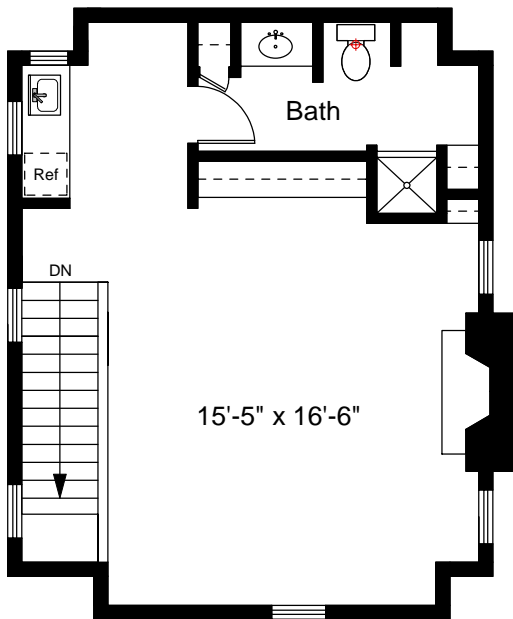
Scale 1/8" = 1'-0"

1

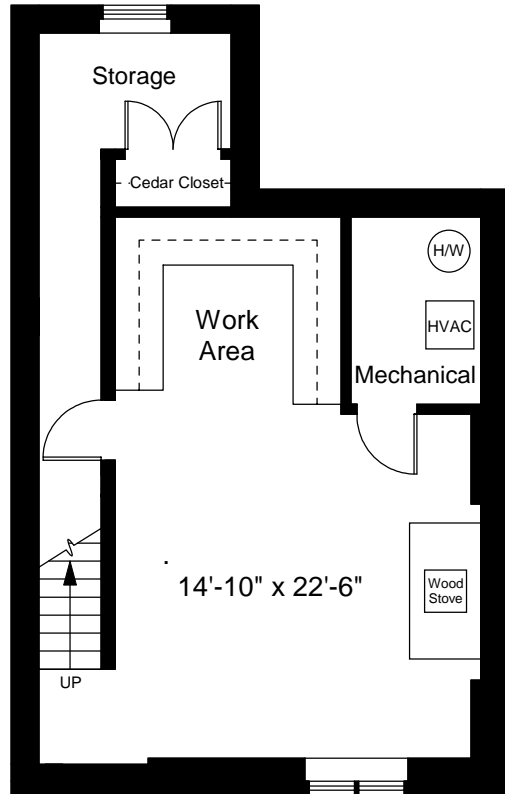


Completed: February, 2008
 Note: Dimensions are not guaranteed and are provided for informational purposes only.

NEW ENGLAND
 FLOOR PLANS
 & PHOTOGRAPHY
 (800) 328-0217



Third Floor Plan
Ceiling Height = 7'-5"

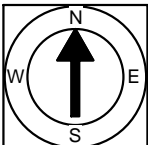


Basement Floor Plan
Ceiling Height = 7'-5"



Scale 1/8" = 1'-0"

2



Completed: February, 2008

Note: Dimensions are not guaranteed and are provided for informational purposes only.

NEW ENGLAND
FLOOR PLANS
& PHOTOGRAPHY
(800) 328-0217