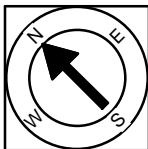


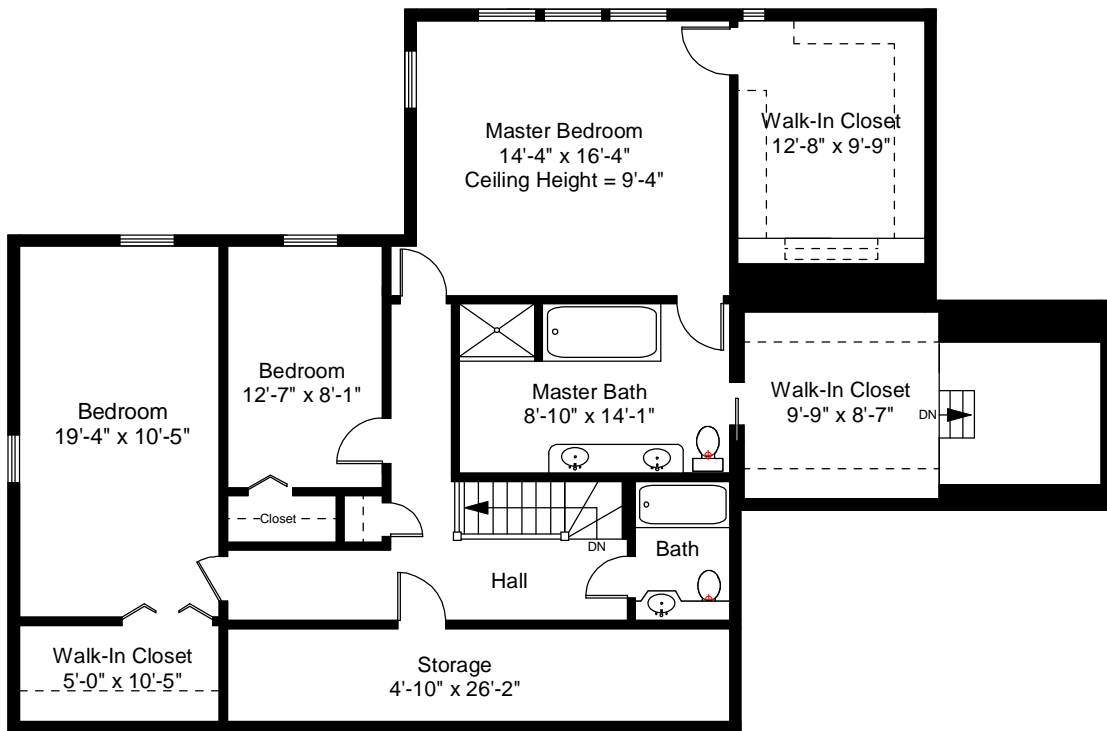
1



Completed: October, 2008

Note: Dimensions are not guaranteed and are provided for informational purposes only.


NEW ENGLAND
 FLOOR PLANS
 & PHOTOGRAPHY
 (800) 328-0217

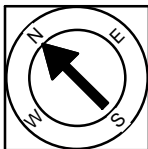


Second Floor Plan
Ceiling Height = 7'-6"



Scale 1" = 10'-0"

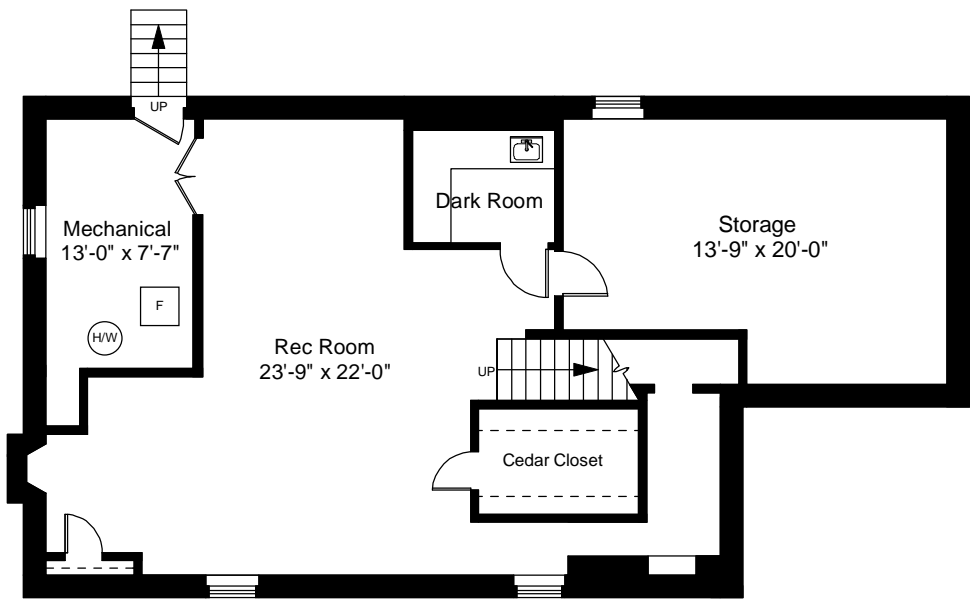
2



Completed: October, 2008

Note: Dimensions are not guaranteed and are provided for informational purposes only.

NEW ENGLAND
FLOOR PLANS
& PHOTOGRAPHY
(800) 328-0217

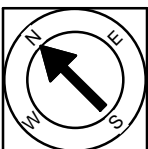


Basement Floor Plan
Ceiling Height = 6'-8"



Scale 1" = 10'-0"

3



Completed: October, 2008

Note: Dimensions are not guaranteed and are provided for informational purposes only.

NEW ENGLAND
— FLOOR PLANS —
& PHOTOGRAPHY
(800) 328-0217