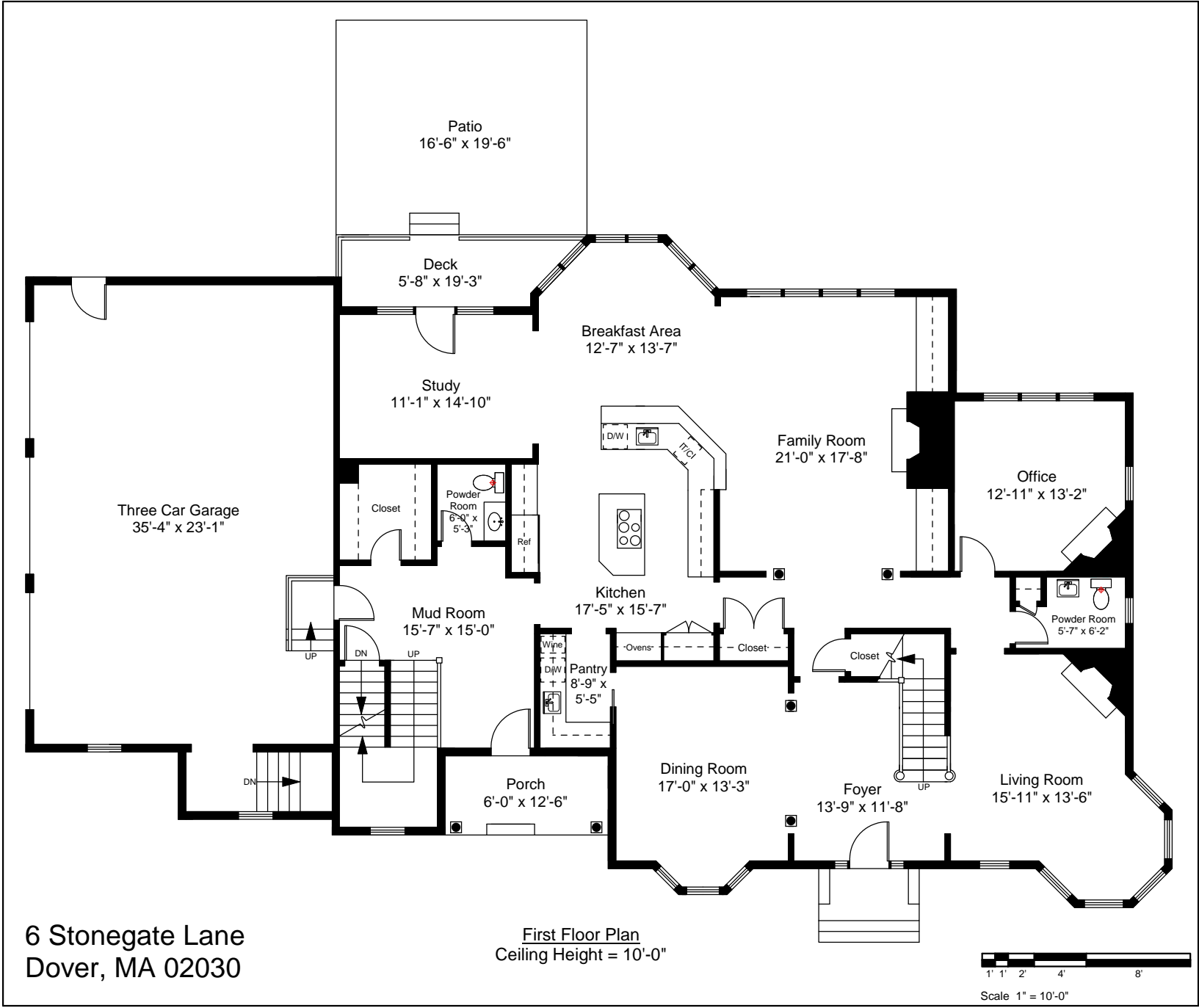
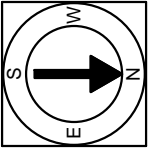


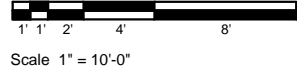
Completed: June, 2010

Note: Dimensions are not guaranteed and are provided for informational purposes only.

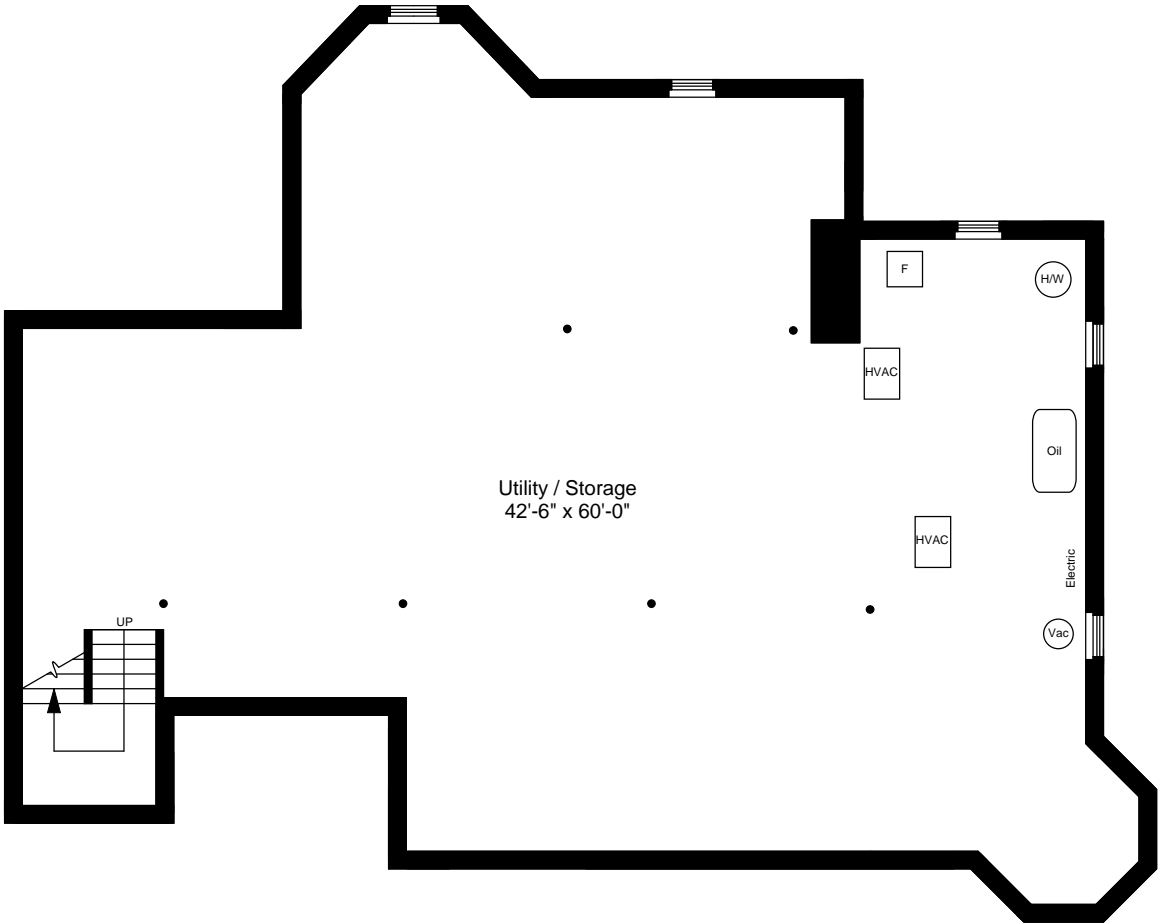
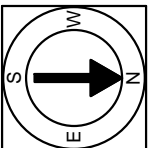


6 Stonegate Lane
Dover, MA 02030

First Floor Plan
Ceiling Height = 10'-0"



Completed: June, 2010
Note: Dimensions are not guaranteed and are provided for informational purposes only.



Basement Floor Plan
Ceiling Height = 8'-0"

6 Stonegate Lane
Dover, MA 02030



Scale 1" = 10'-0"