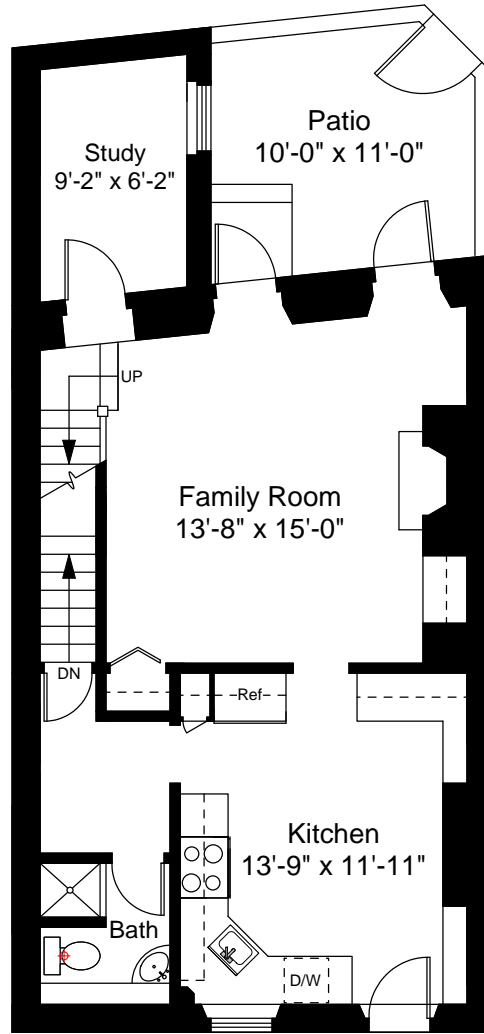


**Basement Floor Plan**  
Ceiling Height = 6'-2"



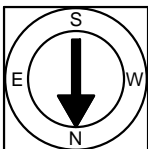
**Garden Level Floor Plan**  
Ceiling Height = 7'-11"

88 Pinckney Street  
Boston, MA 02114



Scale 1/8" = 1'-0"

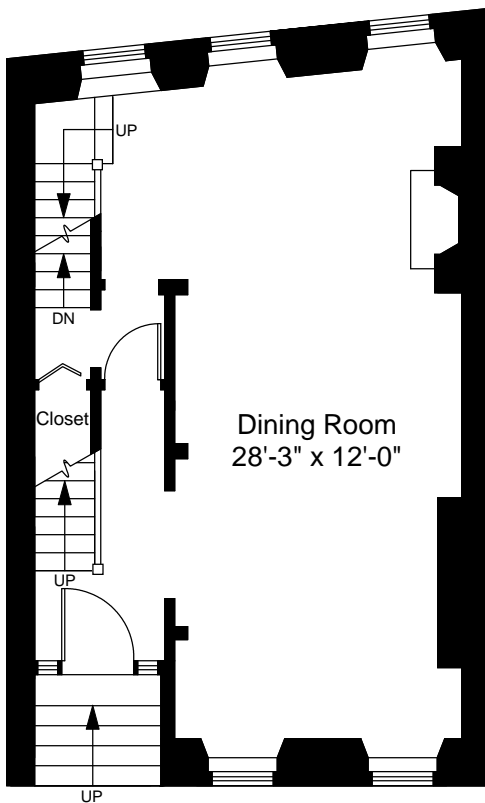
1



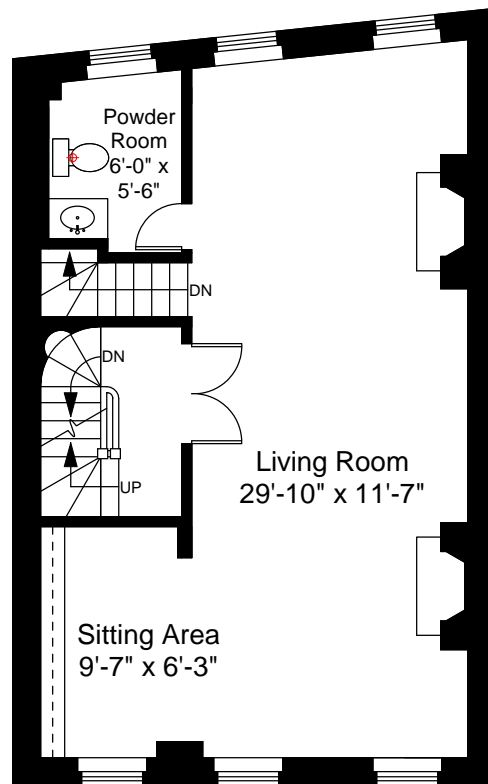
Completed: September, 2009

Note: Dimensions are not guaranteed and are provided for informational purposes only.

NEW ENGLAND  
FLOOR PLANS  
& PHOTOGRAPHY  
(800) 328-0217



First Floor Plan  
Ceiling Height = 8'-0"



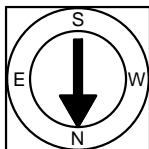
Second Floor Plan  
Ceiling Height = 7'-10"

88 Pinckney Street  
Boston, MA 02114



Scale 1/8" = 1'-0"

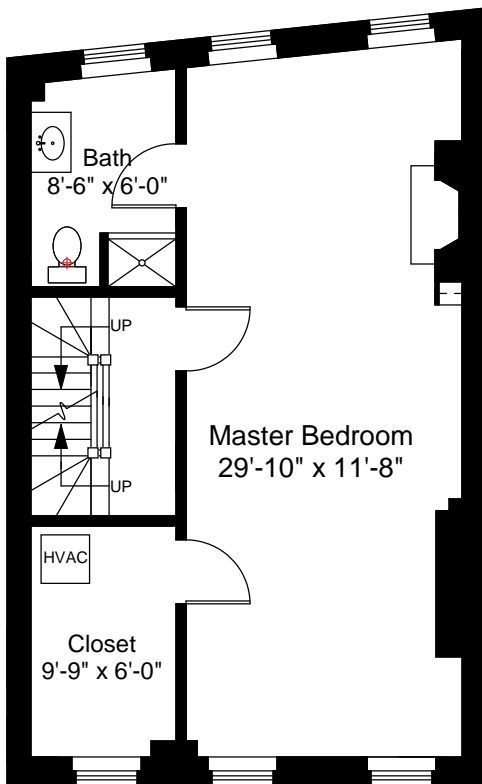
2



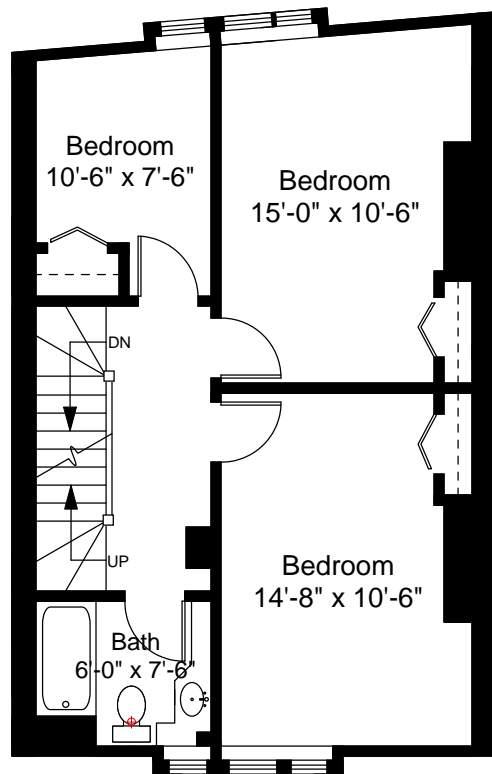
Completed: September, 2009

Note: Dimensions are not guaranteed and are provided for informational purposes only.

  
NEW ENGLAND  
—FLOOR PLANS—  
& PHOTOGRAPHY  
(800) 328-0217



Third Floor Plan  
Ceiling Height = 7'-3"



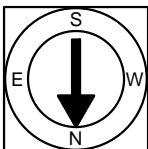
Fourth Floor Plan  
Ceiling Height = 8'-8"

88 Pinckney Street  
Boston, MA 02114



Scale 1/8" = 1'-0"

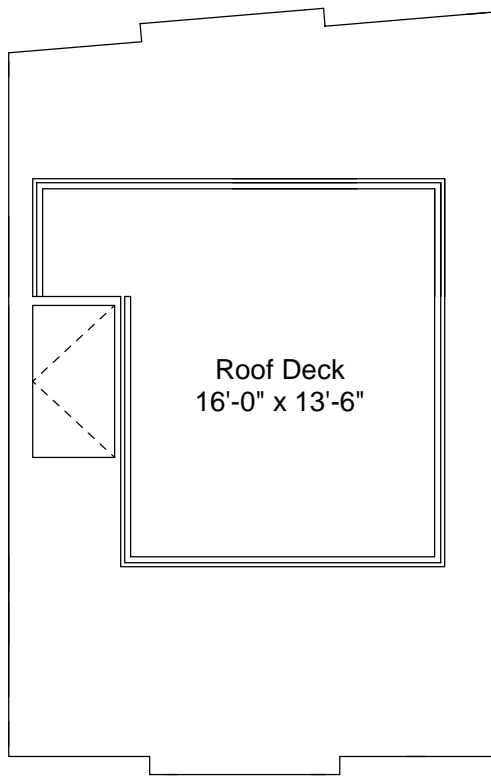
3



Completed: September, 2009

Note: Dimensions are not guaranteed and are provided for informational purposes only.

**NEW ENGLAND**  
—FLOOR PLANS—  
& PHOTOGRAPHY  
(800) 328-0217



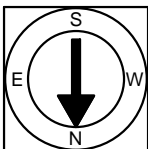
Roof Plan

88 Pinckney Street  
Boston, MA 02114



Scale 1/8" = 1'-0"

4



Completed: September, 2009

Note: Dimensions are not guaranteed and are provided for informational purposes only.

  
NEW ENGLAND  
— FLOOR PLANS —  
& PHOTOGRAPHY  
(800) 328-0217