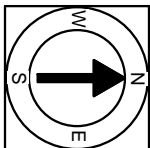


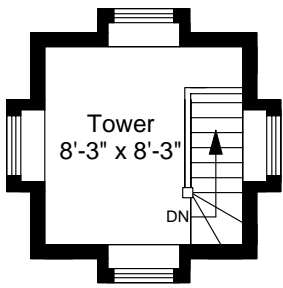
1



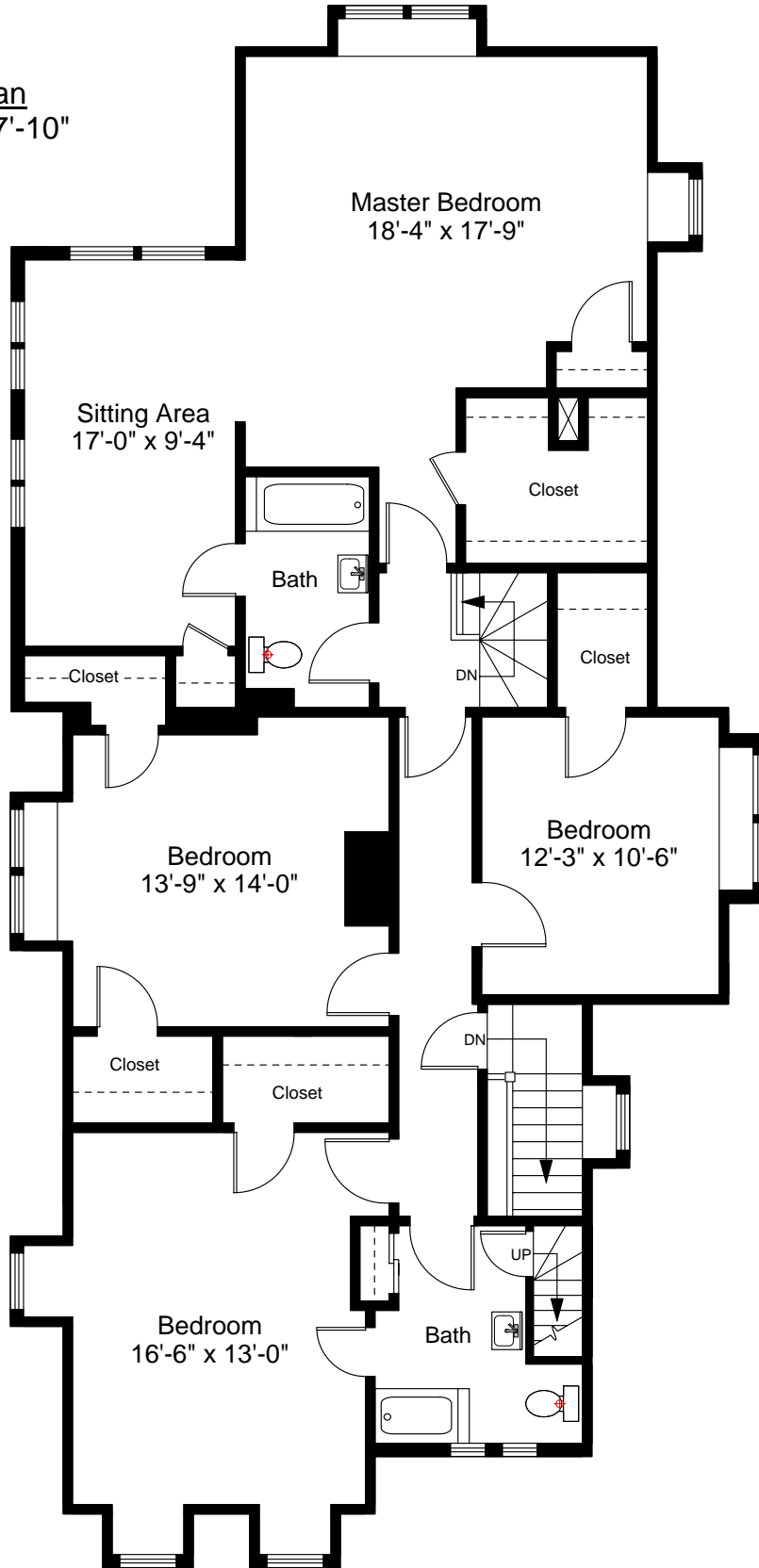
Completed: June, 2008

Note: Dimensions are not guaranteed and are provided for informational purposes only.





Third Floor Plan
Ceiling Height = 7'-10"

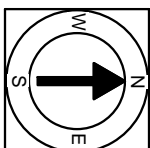


Second Floor Plan
Ceiling Height = 9'-0"



Scale 1/8" = 1'-0"

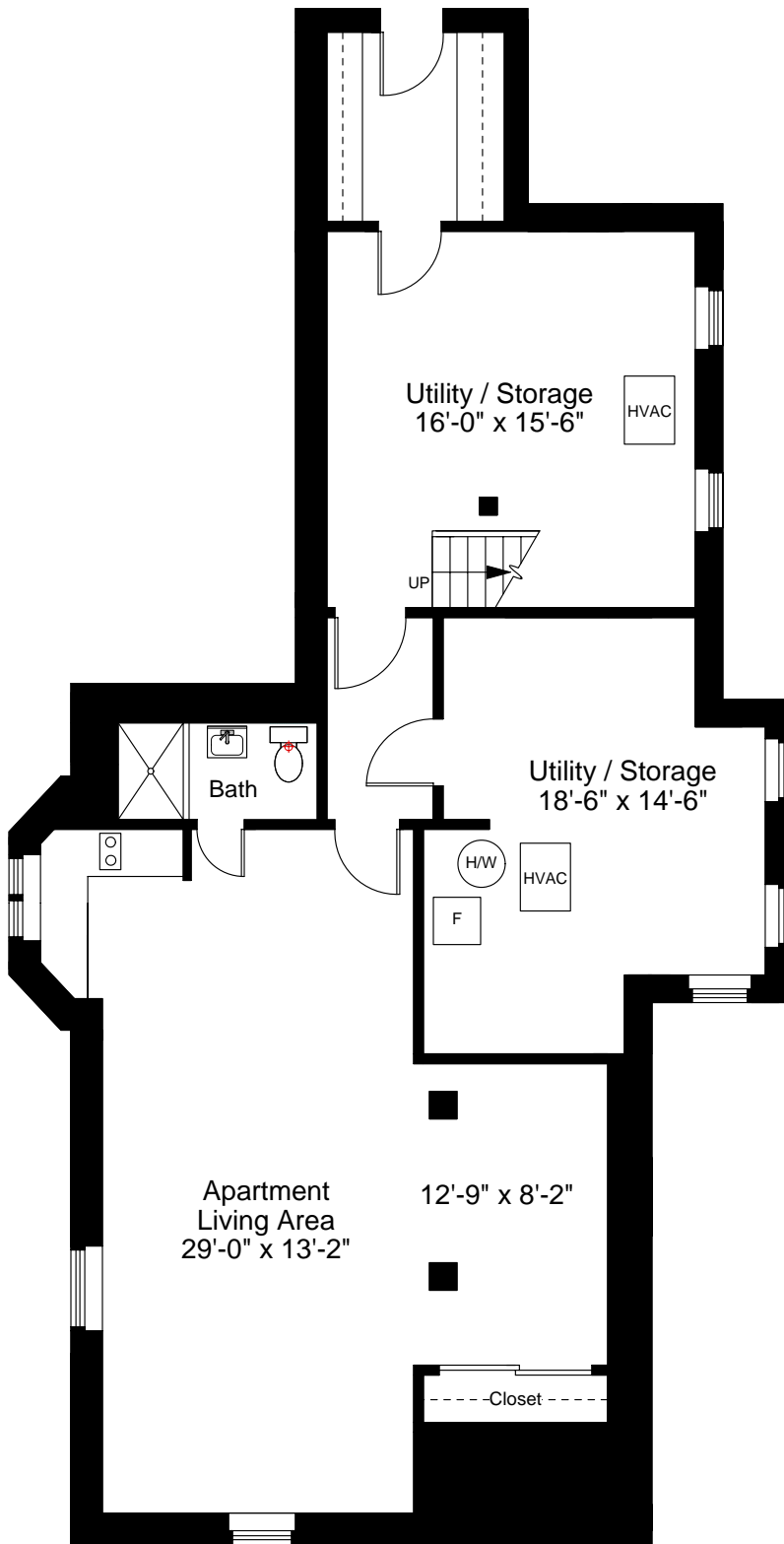
2



Completed: June, 2008

Note: Dimensions are not guaranteed and are provided for informational purposes only.

NEW ENGLAND
—FLOOR PLANS—
& PHOTOGRAPHY
(800) 328-0217

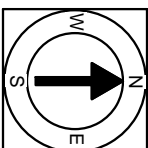


Lower Level Floor Plan
Ceiling Height = 7'-7"



Scale 1/8" = 1'-0"

3



Completed: June, 2008

Note: Dimensions are not guaranteed and are provided for informational purposes only.

NEW ENGLAND
— FLOOR PLANS —
& PHOTOGRAPHY
(800) 328-0217