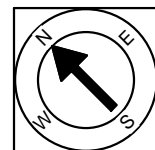
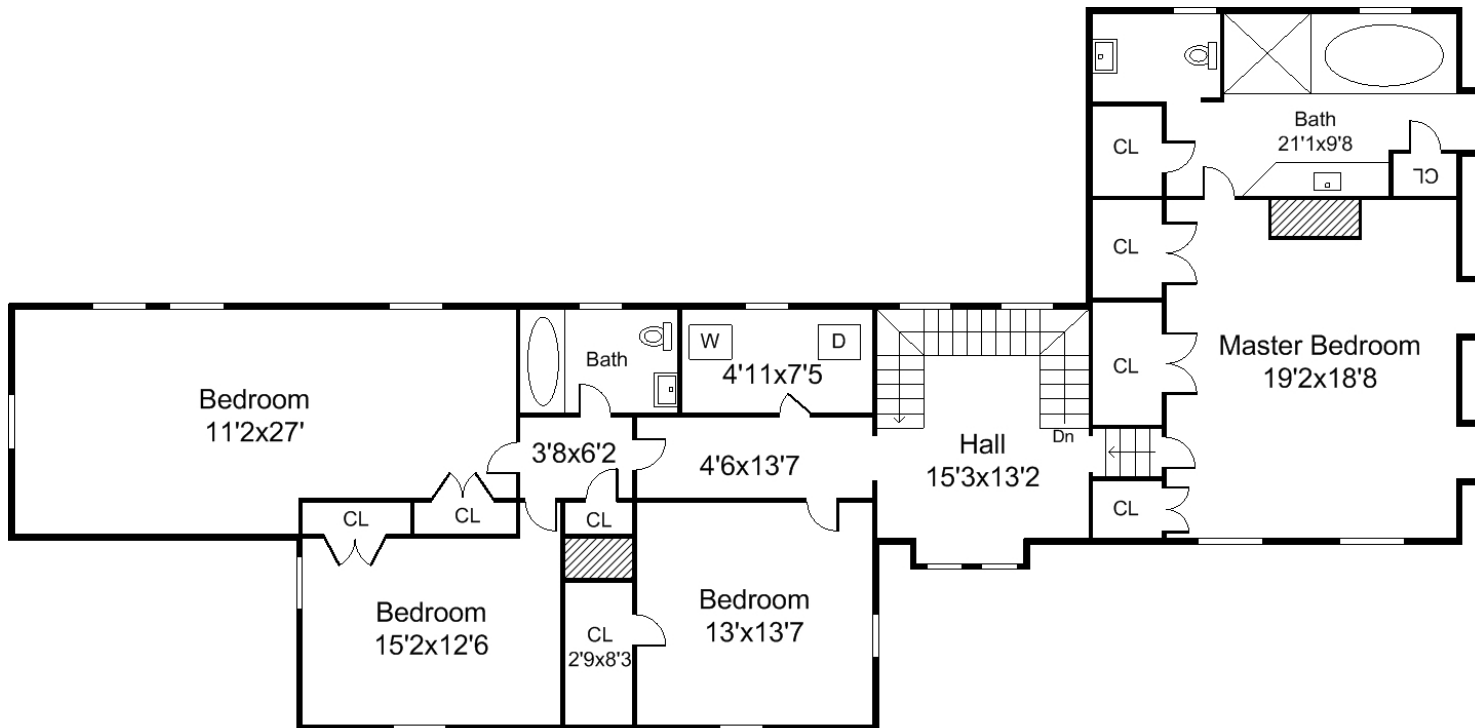


First Floor Plan
Ceiling Height = 7'-7"

Completed: April, 2009
 Note: Dimensions are not guaranteed and are provided for informational purposes only.

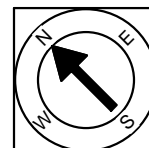


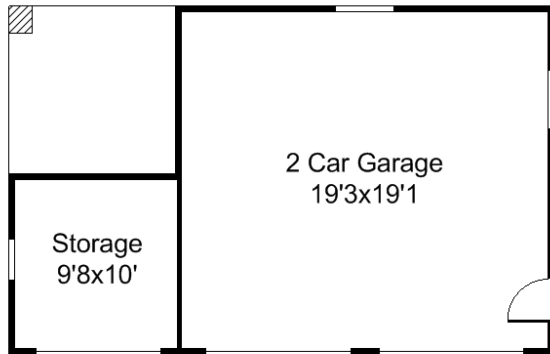


Second Floor Plan
Ceiling Height = 7'-4"

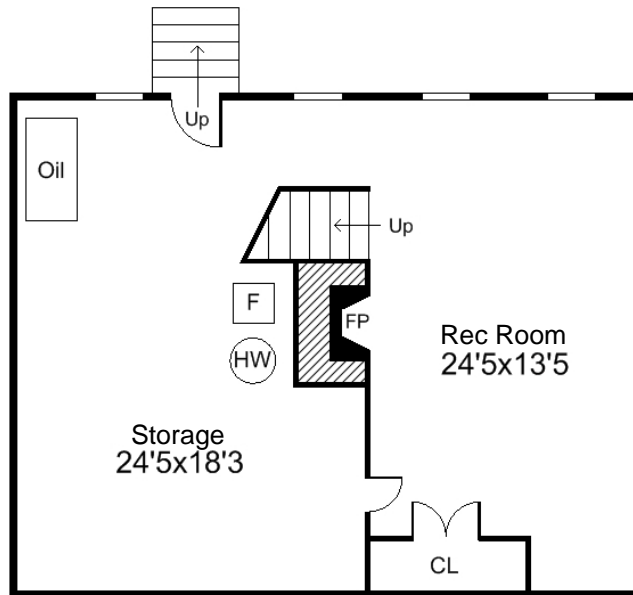
Completed: April, 2009

Note: Dimensions are not guaranteed and are provided for informational purposes only.





Garage Detail Plan



Basement Floor Plan
Ceiling Height = 6'-10"

Completed: April, 2009

Note: Dimensions are not guaranteed and are provided for informational purposes only.

